

TRAILERS



2012 WABASH 53 Ft. DuraPlate Van, 102 Inches Wide, 13 Ft. 6 Inches High, 110 Inch Door Opening, Aluminum Roof, Skylights, Logistics Posts, Scuff Plate, Threshold Plate, Front & Rear Vents, Galvanized Door Frame & Buck Plate, Swing Doors, Dock Locks, Galvanized ICC Bumper, Air Release Sliding Tandem, Air Ride Suspension, 22.5 Low Profile Tires, Disc Wheels



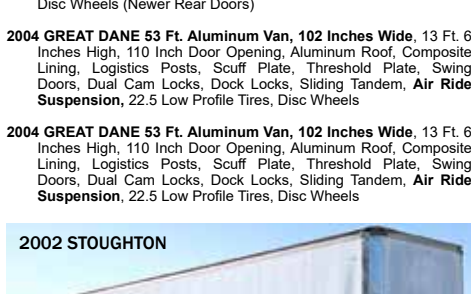
2008 GREAT DANE 13 Ft. 6 Inches High, 110 Inch Door Opening, Aluminum Roof, Plywood Lined, Logistics Posts, Scuff Plate, Threshold Plate, Stainless Steel Buck Plate, Swing Doors, Air Release Sliding Tandem, Air Ride Suspension, 22.5 Low Profile Tires, Disc Wheels



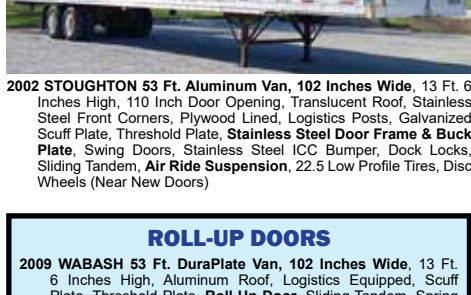
2007 GREAT DANE 13 Ft. 6 Inches High, 110 Inch Door Opening, Aluminum Roof, Plywood Lined, Logistics Posts, Scuff Plate, Threshold Plate, Swing Doors, Under Trailer Wind Deflector, Air Release Sliding Tandem, Air Ride Suspension, 22.5 Low Profile Tires, Disc Wheels



2007 WABASH 53 Ft. DuraPlate Van, 102 Inches Wide, 13 Ft. 6 Inches High, 110 Inch Door Opening, Aluminum Roof, Plywood Lined, Logistics Posts, Scuff Plate, Threshold Plate, Swing Doors, Under Trailer Wind Deflector, Air Release Sliding Tandem, Air Ride Suspension, 22.5 Low Profile Tires, Disc Wheels



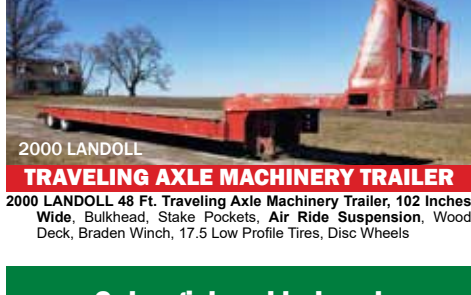
2006 WABASH 53 Ft. DuraPlate Van, 102 Inches Wide, 13 Ft. 6 Inches High, 110 Inch Door Opening, Aluminum Roof, Plywood Lined, Logistics Posts, Scuff Plate, Threshold Plate, Swing Doors, Dual Cam Locks, Sliding Tandem, Spring Suspension, 22.5 Low Profile Tires, Disc Wheels (Newer Rear Doors)



2004 GREAT DANE 53 Ft. Aluminum Van, 102 Inches Wide, 13 Ft. 6 Inches High, 110 Inch Door Opening, Translucent Roof, Plywood Lining, Logistics Posts, Scuff Plate, Threshold Plate, Swing Doors, Dual Cam Locks, Dock Locks, Sliding Tandem, Air Ride Suspension, 22.5 Low Profile Tires, Disc Wheels



2004 GREAT DANE 53 Ft. Aluminum Van, 102 Inches Wide, 13 Ft. 6 Inches High, 110 Inch Door Opening, Translucent Roof, Plywood Lining, Logistics Posts, Scuff Plate, Threshold Plate, Swing Doors, Dual Cam Locks, Dock Locks, Sliding Tandem, Air Ride Suspension, 22.5 Low Profile Tires, Disc Wheels



2002 STOUGHTON 53 Ft. Aluminum Van, 102 Inches Wide, 13 Ft. 6 Inches High, 110 Inch Door Opening, Aluminum Roof, Composite Lining, Logistics Posts, Scuff Plate, Threshold Plate, Swing Doors, Dual Cam Locks, Dock Locks, Sliding Tandem, Spring Suspension, 22.5 Low Profile Tires, Disc Wheels

Get registered today at Proxibid.com/usactioneers



2002 STRICK 53 Ft. Aluminum Van, 102 Inches Wide, 13 Ft. 6 Inches High, 110 Inch Door Opening, Translucent Roof, E Track, Plywood Lined, Scuff Plate, Threshold Plate, Swing Doors, Sliding Tandem, Spring Suspension, 22.5 Low Profile Tires, Disc Wheels (Damage to Roof in Nose)



2001 WABASH 53 Ft. Aluminum Plate Van, 102 Inches Wide, 13 Ft. 6 Inches High, 110 Inch Door Opening, Aluminum Roof, Logistics Posts, Scuff Plate, Threshold Plate, Swing Doors, Sliding Tandem, Spring Suspension, 22.5 Low Profile Tires, Disc Wheels



2000 WABASH 53 Ft. Aluminum Plate Van, 102 Inches Wide, 13 Ft. 6 Inches High, 110 Inch Door Opening, Aluminum Roof, Logistics Posts, Scuff Plate, Threshold Plate, Swing Doors, Sliding Tandem, Spring Suspension, 22.5 Low Profile Tires, Disc Wheels



1999 UTILITY 53 Ft. Aluminum Van, 102 Inches Wide, 13 Ft. 6 Inches High, 110 Inch Door Opening, Translucent Roof, Stainless Steel Front Corners, Plywood Lined, Logistics Posts, Scuff Board, Threshold Plate, Stainless Steel Door Frame & Buck Plate, Swing Doors, Sliding Tandem, Air Ride Suspension, 22.5 Low Profile Tires, Disc Wheels



1999 STOUGHTON 53 Ft. Aluminum Van, 102 Inches Wide, 13 Ft. 6 Inches High, 110 Inch Door Opening, Translucent Roof, Plywood Lined, Logistics Posts, Scuff Plate, Threshold Plate, Swing Doors, Sliding Tandem, Air Ride Suspension, 22.5 Low Profile Tires, Disc Wheels



1998 FRUEHAUF 53 Ft. Aluminum Van, 102 Inches Wide, 13 Ft. 6 Inches High, 110 Inch Door Opening, Aluminum Roof, Plywood Lined, Logistics Posts, Scuff Plate, Threshold Plate, Swing Doors, Sliding Tandem, Air Ride Suspension, 22.5 Low Profile Tires, Disc Wheels (Rear Doors Bad)



1998 MONON 53 Ft. Aluminum Van, 102 Inches Wide, 13 Ft. 6 Inches High, 110 Inch Door Opening, Aluminum Roof, Plywood Lined, Logistics Posts, Scuff Plate, Threshold Plate, Swing Doors, Sliding Tandem, Air Ride Suspension, 22.5 Low Profile Tires, Disc Wheels



1998 FRUEHAUF 53 Ft. Aluminum Van, 102 Inches Wide, 13 Ft. 6 Inches High, 110 Inch Door Opening, Aluminum Roof, Plywood Lined, Logistics Posts, Scuff Plate, Threshold Plate, Swing Doors, Sliding Tandem, Air Ride Suspension, 22.5 Low Profile Tires, Disc Wheels



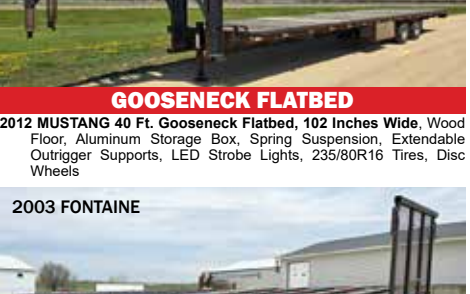
2007 WABASH 53 Ft. Aluminum Reefer, 102 Inches Wide, 13 Ft. 6 Inches High, Carrier Unit, Bulkhead, White Lined, Cold Chute, Rear Vent, Stainless Steel Door Frame & Buck Plate, Stainless Steel Swing Doors, Stainless Steel ICC Bumper, Dock Locks, Air Release Sliding Tandem, Air Ride Suspension, 22.5 Low Profile Tires, Disc Wheels, Aluminum Disc Outside



2011 UTILITY 3000R 53 Ft. Aluminum Reefer, 102 Inches Wide, 13 Ft. 6 Inches High, Less Unit, Bulkhead, Stainless Steel Front Corners, White Lined, Cold Chute, Scuff Plate, Stainless Steel Door Frame & Buck Plate, Swing Doors, Under Trailer Wind Deflector, Air Release Sliding Tandem, Air Ride Suspension, 22.5 Low Profile Tires, Disc Wheels



1999 UTILITY 51 Ft. Aluminum Reefer, 96 Inches Wide, 13 Ft. 6 Inches High, Less Unit, White Lined, Interior Lights, Roll-Up Door, Stainless Steel Door Frame & Buck Plate, Scuff Plate, Aluminum Disc Outside



2005 MANAC 53 Ft. Aluminum Drop Deck, 102 Inches Wide, 11 Ft. 6 Inches High, Main Deck, Aluminum Floor with Four Nail Strips, Winch Rail with Three Nail Strips, Winch Rail with Winches, J-Hook Tie Down System, Two Aluminum Storage Boxes, Air Ride Suspension with Dump Valve & Weight Gauge, Stationary Load, Sliding Rear Axle, 3 Position with Air Release Pins, Ramp Pins on Top & Main Deck, 17.5 Low Profile Tires, Aluminum Disc Wheels



2004 FONTAINE Infinity 48 Ft. Aluminum Combination Drop Deck, 102 Inches Wide, 10 Ft. Top Deck, 23 Inch Drop, 42 Ft. Main Deck, Aluminum Floor with Four Nail Strips, Winch Rail with Winches & Straps, 10 Ft. 1 Inch Spread Axle, Air Ride Suspension, 22.5 Low Profile Tires, Disc Wheels, Aluminum Disc Outside



2012 MUSTANG 40 Ft. Gooseneck Flatbed, 102 Inches Wide, Wood Floor, Aluminum Storage Box, Spring Suspension, Extendable Outigger Supports, LED Strobe Lights, 235R0R16 Tires, Disc Wheels



2003 FONTAINE 48 Ft. Flatbeds, 96 Inches Wide, Wood Floor, Bulkhead, Winches, Aluminum Storage Box, Sliding Tandem, Spring Suspension, Extendable Truss Supports, 22.5 Low Profile Tires, Disc Wheels, Aluminum Disc Outside (Truss Supports Can Be Removed To Make Flat)



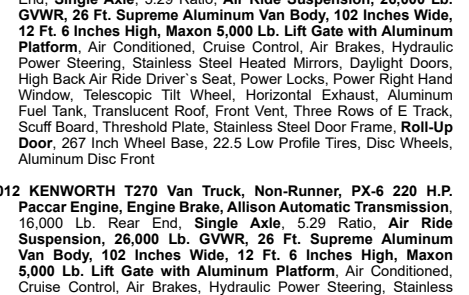
2003 BENSON 48 Ft. Flatbeds, 102 Inches Wide, Aluminum Floor with Three Nail Strips, Double Pipe Spools, Winch Rail with Winches, J-Hook Tie Down System, Two Aluminum Storage Boxes, 10 Ft. 1 Inch Spread Axle, Air Ride Suspension, 24.5 Low Profile Tires, Disc Wheels, Aluminum Disc Outside



2016 INTERNATIONAL 4300 Van Truck, 103,248 Miles, ISB 6.7 Liter 250 H.P. Cummins Engine, Allison Automatic Transmission, 19,000 Lb. Rear End, Single Axle, 5.57 Ratio, Spring Suspension, 25,999 GVWR, 24 Ft. US Truck Body Aluminum Van Body, 102 Inches Wide, Dolly Legs Rear, Lift Gate with Aluminum Platform, Air Conditioned, Cruise Control, Air Brakes, Hydraulic Power Steering, Stainless Steel Heated Mirrors, High Back Air Ride Driver's Seat, Telescopic Tilt Wheel, Horizontal Exhaust, Aluminum Fuel Tank, Translucent Roof, E Track, Plywood Lined, Interior Lights, Scuff Plate, Threshold Plate, Stainless Steel Door Frame, Roll-Up Door, 287 Inch Wheel Base, 11R22.5 Tires, Disc Wheels



2012 KENWORTH T270 Van Truck, PX-6 220 H.P. Paccar Engine, Allison Automatic Transmission, 16,000 Lb. Rear End, Single Axle, 5.29 Ratio, Air Ride Suspension, 26,000 Lb. GVWR, 26 Ft. Supreme Aluminum Van Body, 102 Inches Wide, 12 Ft. 6 Inches High, Maxon 5,000 Lb. Lift Gate with Aluminum Platform, Air Conditioned, Cruise Control, Air Brakes, Hydraulic Power Steering, Stainless Steel Heated Mirrors, Daylight Doors, High Back Air Ride Driver's Seat, Power Locks, Power Right Hand Window, Telescopic Tilt Wheel, Horizontal Exhaust, Aluminum Fuel Tank, Translucent Roof, Front Vent, Three Rows of E Track, Scuff Board, Threshold Plate, Stainless Steel Door Frame, Roll-Up Door, 287 Inch Wheel Base, 22.5 Low Profile Tires, Disc Wheels, Aluminum Disc Front



2012 KENWORTH T270 Van Truck, Non-Runner, PX-6 220 H.P. Paccar Engine, Allison Automatic Transmission, 16,000 Lb. Rear End, Single Axle, 5.29 Ratio, Air Ride Suspension, 26,000 Lb. GVWR, 26 Ft. Supreme Aluminum Van Body, 102 Inches Wide, 12 Ft. 6 Inches High, Maxon 5,000 Lb. Lift Gate with Aluminum Platform, Air Conditioned, Cruise Control, Air Brakes, Hydraulic Power Steering, Stainless Steel Heated Mirrors, Daylight Doors, High Back Air Ride Driver's Seat, Power Locks, Power Right Hand Window, Telescopic Tilt Wheel, Horizontal Exhaust, Aluminum Fuel Tank, Translucent Roof, Front Vent, Three Rows of E Track, Scuff Board, Threshold Plate, Stainless Steel Door Frame, Roll-Up Door, 287 Inch Wheel Base, 22.5 Low Profile Tires, Disc Wheels, Aluminum Disc Front (Driveshaft in Box, Air Dryer Missing a Plug, but Runs. However, it Will Need to Towed or Hauled)



1996 KENWORTH T800 Van Truck, Series 60 11.1 Liter 350 H.P. (Per Owner) Detroit Engine, Allison Automatic Transmission, 40,000 Lb. Rear Ends, Full Screw, 4.11 Ratio, Air Ride Suspension, 20 Ft. US Truck Bodies Aluminum Van Body, 96 Inches Wide, Air Conditioned, Aluminum Bumper, Cruise Control, Hydraulic Power Steering, Stainless Steel Heated Mirrors with Power Right Mirror, Splendor Interior, Daylight Doors, High Back Air Ride Driver's Seat, Power Right Hand Window, Single Chrome Stack, Dual Aluminum Fuel Tanks, Stainless Steel Quarter Fenders, Translucent Roof, E Track, Plywood Lined, Interior Lights, Scuff Plate, Threshold Plate, Stainless Steel Door Frame, Roll-Up Door, 236 Inch Wheel Base, 24.5 Low Profile Tires, Disc Wheels, Aluminum Disc Front



2000 FORD E-450 Super Duty Passenger Bus, 7.3 Liter Power Stroke Diesel Engine, Allison Automatic Transmission with Overdrive, Single Axle, Spring Suspension, 24 Passenger Eldorado National Bus Body, Rear Heat & Air Conditioner, Air Conditioned, Chrome Bumper, Hydraulic Power Steering, Stainless Steel Mirrors, Power Driver's Seat, Telescopic Tilt Wheel, Horizontal Exhaust, 176 Inch Wheel Base, 16 Inch Tires, Dual Wheels Rear, Disc Wheels



2013 CAPACITY Yard Tractor, ISB 6.7 Liter 200 H.P. Cummins Engine, Allison Automatic Transmission, Single Axle, Dura-Ride Suspension, Rated-Roof Cab, Air Conditioned, Hydraulic Power Steering, Stainless Steel Heated Mirrors, High Back Air Ride Driver's Seat, Telescopic Tilt Wheel, Single Stack, Single Fuel Tank, Full Fenders, Air Release/Hydraulic 5th, 130 Inch Wheel Base, 22.5 Low Profile Tires, Disc Wheels



2015 B&B Tilt Bed Trailer, 102 Inches Wide, 5 Ft. Tongue, 16 Ft. Tilt Bed, 80 Inches Wide Between Fenders, Full Fenders, Wood Floor, 36 Inch Bulkhead, Stake Pockets, 16 Inch Tires, Disc Wheels



2012 SKYJACK S311-3219 Electric Scissor Lift, 24 Volt On Board Charger, 19 Ft. Platform Height, 2 Person/550 Lb. Capacity, Extendable Work Platform, 2,580 Lb. Machine Weight, Hard Rubber Tires, Disc Wheels

THURSDAY • MAY 16, 2024 • 9:00AM CT

4700 69TH AVENUE • MILAN, ILLINOIS

ABSOLUTE PUBLIC LIVE INTERNET ONLY AUCTION!

There is NO ONSITE BIDDING for this auction!
Customers must register Absentee/Cellular or Online at Proxibid. Absentee/Cellular bidding is on a first come, first served basis.

No Minimums! No Reserves! No Buy Backs!
ABSOLUTE AUCTION
All equipment is sold "AS IS, WHERE IS." All equipment is sold to the highest bidder with no bid-ins or reserves. The condition of the equipment is expressed by the owners and no warranty or guarantee is expressed or implied. The buyer is required to pay for purchases regardless of their faults. This brochure is subject to additions or deletions and is only a guide to the equipment listed on this auction. Announcements made the day of the auction will take precedence over any printed or electronic material.

TERMS
Complete payment is due Monday, May 20, 2024 by 5:00pm via wire, cash, or cashier's check. Personal or company checks are accepted IF accompanied by a bank letter guaranteeing payment. In addition, first time buyers must provide a letter of recognition from their banker prior to registering, specifically authorizing US Auctioneers to contact their banker in reference to their ability to pay for purchases.
Premium Fees: A 5% Buyers' Premium will be added to the purchase price. Internet buyers will incur an additional 2% internet fee. The combined fees will be shown on your invoice. All checks are made payable to US Auctioneers, Inc. All purchases are subject to verification with your financial institution. Picture ID required. Titles will be mailed.

The buyer shall take full responsibility and assume all risk of loss for said equipment or property from the time the Auctioneer accepts the final bid from the buyer.
INSPECTION OF EQUIPMENT
The auction site will be open for equipment inspection from 8:00am to 4:30pm Friday, May 10th thru Saturday, May 11th. **Closed Sunday, May 12th.** Equipment inspections will resume from 8:00am to 4:30pm Monday, May 13th thru Wednesday, May 15th. You are strongly encouraged to inspect the equipment before auction day. If you are unable to do so, please contact our professional team for assistance. The auction site is closed on auction day, Thursday, May 16th.

AUCTION REGISTRATION
• Online bidding is available thru Proxibid. To register and bid online, visit proxibid.com/usactioneers.
• Absentee/Cellular bidding is on a first come, first served basis. Registration must be completed by 4:30pm on Tuesday, May 14th. Please call 800-992-2893 for more information.

ORDER OF SALE
Truck tractors will be sold first followed by straight trucks and miscellaneous vehicles. Trailers will be sold last.
POSSESSION OF EQUIPMENT
IMMEDIATE POSSESSION OF EQUIPMENT UPON PROPER SETTLEMENT ONLY AS NOTED UNDER "TERMS!" Personal or company checks NOT accompanied by a bank letter guaranteeing payment must be verified and all wire transfers must be received before possession of equipment will be given!

IMPORTANT EQUIPMENT REMOVAL PROCEDURE
The auction site (4700 69th Ave., Milan, IL) will close at 4:30pm on Wednesday, May 15th and will reopen at 8:00am on Friday, May 17th. Equipment can be picked up between 8:00am and 4:30pm Monday through Friday. We will be open on Saturday, May 18, 2024 only for your pickup convenience. **We close for lunch Noon to 1:00pm each day.** If equipment is not picked up by Friday, May 31, 2024 there will be a \$50 per piece per day fee. **This fee must be paid before equipment can be removed. Need help transporting? Contact American Driveaway at 217-783-2247.**

WINTER EQUIPMENT PICK-UP PROCEDURE (January - March and November - December)
Please call ahead at least 24 hours in advance when picking up power units. We may need to warm them up in the shop to get them started. This will help us serve you better with the cold temperatures coming.

AUCTIONEER'S NOTE
THIS ABSOLUTE PUBLIC AUCTION includes equipment from several fleet owners and owner/operators who are selling equipment as a part of their replacement programs or in order to reduce the size of their operations. This auction offers an excellent opportunity to purchase a wide variety of well-maintained truck tractors, trucks, and trailers. Maintenance histories will be posted on vehicles where provided by owners.

USA Auctioneers, Inc.
1-800-992-2893
Illinois Auction License No. 444.000265

THURSDAY • MAY 16, 2024

MILAN, ILLINOIS

LIVE ONLINE ONLY AUCTION! NO ONSITE BIDDING!

RETURN SERVICE REQUESTED FIRST CLASS
P.O. Box 5444
Rock Island, IL 61204

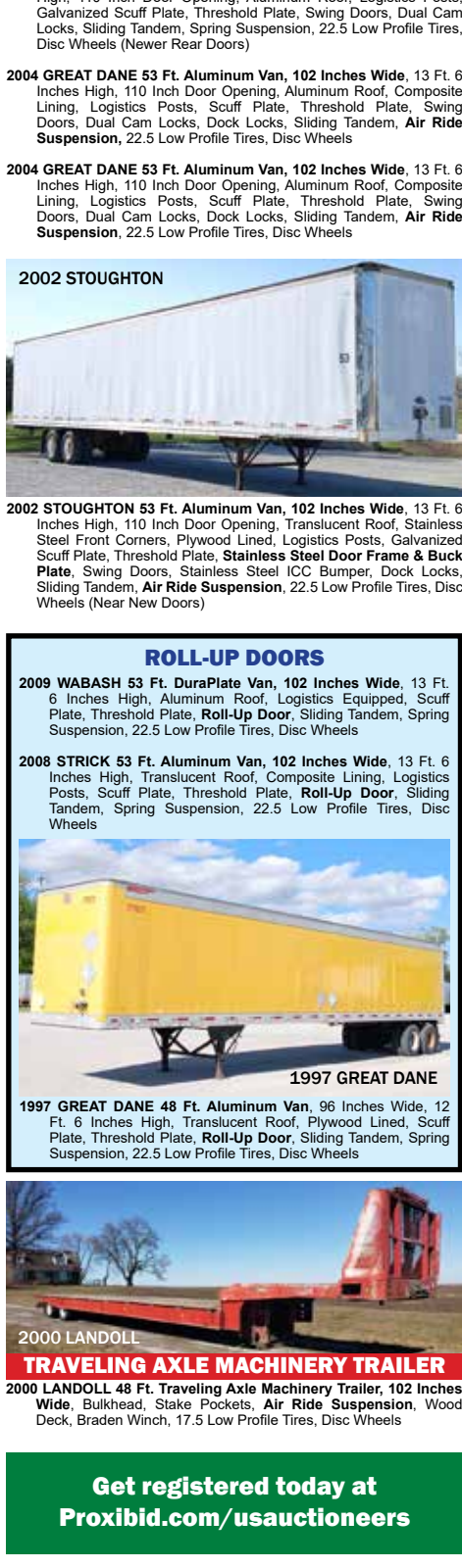
USAuctioneers.com
Check out our website for an up-to-date list of equipment at usauctioneers.com

Get Registered Today!
proxibid.com/usactioneers

Join Our Email List
And receive our brochure long before it arrives via mail. Simply sign up by visiting our website and completing the form at the bottom of the page.

OUR MISSION
DEPENDABLE SERVICE WITH A PERSONAL TOUCH
COMPETITIVE PRICING • RELIABLE DELIVERY DATES
PROFESSIONAL & COURTEOUS DRIVERS
FRIENDLY & ACCOUNTABLE STAFF

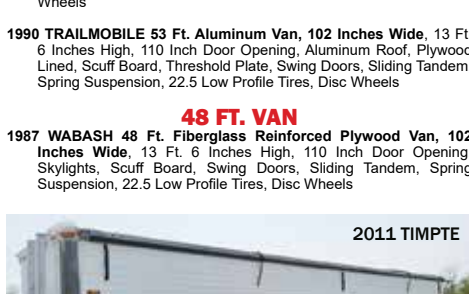
217-783-2247
FAX: 884-828-3501
LOADS@AMERICANDRIVEAWAY.COM
AMERICANDRIVEAWAY
WWW.AMERICANDRIVEAWAY.COM



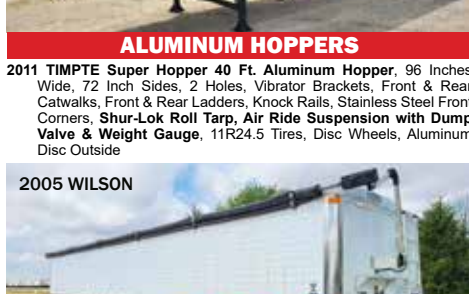
2009 WABASH 53 Ft. DuraPlate Van, 102 Inches Wide, 13 Ft. 6 Inches High, Aluminum Roof, Logistics Posts, Scuff Plate, Threshold Plate, Roll-Up Door, Sliding Tandem, Spring Suspension, 22.5 Low Profile Tires, Disc Wheels



2008 STRICK 53 Ft. Aluminum Van, 102 Inches Wide, 13 Ft. 6 Inches High, Translucent Roof, Composite Lining, Logistics Posts, Scuff Plate, Threshold Plate, Roll-Up Door, Sliding Tandem, Spring Suspension, 22.5 Low Profile Tires, Disc Wheels



2011 TIMPTE Super Hopper 40 Ft. Aluminum Hopper, 96 Inches Wide, 72 Inch Sides, 2 Holes, Vibrator Brackets, Front & Rear Catwalks, Front & Rear Ladders, Knock Rails, Stainless Steel Front Corners, Shur-Lok Roll Tarps, Air Ride Suspension with Dump Valve & Weight Gauge, 11R24.5 Tires, Disc Wheels, Aluminum Disc Outside



2

TRUCKS



2020 PETERBILT

PETERBILT 579S
2020 PETERBILT 579 Conventional, 469,809 Miles, MX13 455 H.P. Paccar Engine, Engine Brake, 12 Speed Automated Transmission, 40,000 Lb. Rear Ends, Full Screw, 3.25 Ratio, Air Ride Suspension, Balance of All Remaining Factory Warranties, 80 Inch High-Rise Walk-In Sleeper, Bunk Beds, Power Inverter, Air Conditioned, Cruise Control, Deep Chrome Bumper, Hydraulic Power Steering, Air Faring, Exterior Visor, Stainless Steel Heated Power Mirrors, Panel Lights, Prestige Interior, Dual High Back Air Ride Seats, Power Locks, Telescopic Tilt Wheel, Power Windows, Fuel Tank Fairings, Horizontal Exhaust, Side Extenders, Dual Aluminum Fuel Tanks, Auxiliary Bunk Heater, Fuel Tank Heaters, Stainless Steel Quarter Fenders, Disc Brakes, Air Slide 5th, 244 Inch Wheel Base, 22.5 Low Profile Tires, Aluminum Disc Wheels



2019 PETERBILT

2019 PETERBILT 579 Ultra Cab Conventional, 493,145 Miles, X-15 Performance Series 565 Cummins Engine, Engine Brake, 13 Speed Automated Ultra Shift Plus Transmission, 40,000 Lb. Rear Ends, Full Screw, 3.55 Ratio, Air Ride Suspension, 80 Inch High-Rise Walk-In Sleeper, SmartNav System, Power Inverter, Shore Power, Air Conditioned, Cruise Control, Deep Chrome Bumper, Hydraulic Power Steering, Stainless Steel Exterior Visor, Stainless Steel Heated Power Mirrors, Panel Lights, Platinum Interior, Dual High Back Air Ride Seats, Power Locks, Power Windows, Refrigerator, Thermo King Evolution Auxiliary Power Unit, Dual Chrome Stacks, Dual Aluminum Fuel Tanks, Auxiliary Bunk Heater, Stainless Steel Half Fenders, Bendix Collision Mitigation System, Air Slide 5th with Ramps, 242 Inch Wheel Base, 11R22.5 Tires, Aluminum Disc Wheels

2018 PETERBILT 579 Ultra Cab Conventional, 570,815 Miles, X-15 Performance Series 565 Cummins Engine, Engine Brake, 13 Speed Automated Ultra Shift Plus Transmission, 40,000 Lb. Rear Ends, Full Screw, 3.55 Ratio, Air Ride Suspension, 80 Inch High-Rise Walk-In Sleeper, SmartNav System, Power Inverter, Shore Power, Air Conditioned, Cruise Control, Deep Chrome Bumper, Hydraulic Power Steering, Stainless Steel Exterior Visor, Stainless Steel Heated Power Mirrors, Panel Lights, Platinum Interior, Dual High Back Air Ride Seats, Power Locks, Power Windows, Refrigerator, Thermo King Evolution Auxiliary Power Unit, Dual Chrome Stacks, Dual Aluminum Fuel Tanks, Auxiliary Bunk Heater, Stainless Steel Half Fenders, Air Slide 5th with Ramps, 242 Inch Wheel Base, 11R22.5 Tires, Aluminum Disc Wheels



2009 PETERBILT

PETERBILT 386
2009 PETERBILT 386 Conventional, ISX 475 H.P. Cummins Engine with EGR Deleted, Engine Brake, 13 Speed Transmission, 40,000 Lb. Rear Ends, Full Screw, 3.55 Ratio, Air Ride Suspension, 76 Inch High-Roof Unibit Walk-In Sleeper, Air Conditioned, Cruise Control, Deep Chrome Bumper, Hydraulic Power Steering, Stainless Steel Exterior Visor, Stainless Steel Heated Power Mirrors, Dual High Back Air Ride Seats, Power Locks, Telescopic Tilt Wheel, Power Windows, Fuel Tank Fairings, Horizontal Exhaust, Side Extenders, Dual Aluminum Fuel Tanks, Stainless Steel Quarter Fenders, Air Slide 5th, 248 Inch Wheel Base, 22.5 Low Profile Tires Front, 44550R22.5 Wide Base Tires Rear, Aluminum Disc Wheels



2014 KENWORTH

KENWORTH T680
2014 KENWORTH T680 Conventional, MX13 455 H.P. Paccar Engine, Engine Brake, 10 Speed Transmission, 40,000 Lb. Rear Ends, Full Screw, 3.25 Ratio, Air Ride Suspension, 76 Inch High-Roof Walk-In Sleeper, Bunk Beds, Power Inverter, Air Conditioned, Cruise Control, Hydraulic Power Steering, Heated Power Mirrors, Vantage Interior, Dual High Back Air Ride Seats, Power Locks, Telescopic Tilt Wheel, Power Windows, Side Extenders, Refrigerator, Fuel Tank Fairings, Rig Master Auxiliary Power Unit, Horizontal Exhaust, Dual Aluminum Fuel Tanks, Auxiliary Bunk Heater, Pro Tech Aluminum Saddle Box, Quarter Fenders, Air Slide 5th, 238 Inch Wheel Base, 22.5 Low Profile Tires, Aluminum Disc Wheels



1995 WHITE GMC

WHITEGMC WIA64TES
1995 WHITEGMC WIA64TES Conventional, Series 60 12.7 Liter 370 H.P. Detroit Engine, Engine Brake, 13 Speed Transmission, 40,000 Lb. Rear Ends, Full Screw, 3.25 Ratio, Air Ride Suspension, Integral Flattop Sleeper, Air Ride Cab, Air Conditioned, Cruise Control, Deep Chrome Bumper, Hydraulic Power Steering, Exterior Visor, Stainless Steel Heated Mirrors with Power Right Mirror, Dual High Back Air Ride Seats, Power Right Hand Window, Single Chrome Stack, Dual Aluminum Fuel Tanks, Air Slide 5th, 198 Inch Wheel Base, 11R22.5 Tires Front, 22.5 Low Profile Tires Rear, Aluminum Disc Wheels



2012 MERCEDES BENZ

2012 MERCEDES BENZ GL 450, V8 Gas 4.7 Liter Mercedes Engine, Automatic Transmission, 4 Doors, Third Row, Dual Climate Control, Resear High, With Electrical, Air Conditioned, Cruise Control, Power Steering, Power Mirrors, Tilt Wheel, Heated Seats, Leather Seats, Navigation System, Power Door Locks, Power Seats, Power Windows, Sun Roof, Disc Brakes, 275/50R20 Tires, Aluminum Alloy Wheels (Windshield is Cracked)



1982 KENWORTH

KENWORTH W900A
1982 KENWORTH W900A Conventional, C-15 475 H.P. Caterpillar Engine, Engine Brake, 18 Speed Transmission, 40,000 Lb. Rear Ends, Full Screw, 4.11 Ratio, Air Ride Suspension, 80 Inch Flat Top Walk-In Sleeper, Air Conditioned, Deep Chrome Bumper, Hydraulic Power Steering, Stainless Steel Exterior Visor, Train Horn, Stainless Steel Heated Moto Mirrors, VIT Interior, Air Ride Driver's Seat, Hardwood Floor, Telescopic Tilt Wheel, Rear Window, Dual Chrome Stacks, Dual Aluminum Fuel Tanks, Stainless Steel Full Fenders, Additional Air & Electrical Connections Rear of Frame, Air Ride Front Axle with Ride Height Adjustment, Air Slide 5th, 312 Inch Wheel Base, 11R24.5 Tires, Aluminum Disc Wheels, 1 Steel Wheel Rear



2016 FREIGHTLINER

FREIGHTLINER CASCADIAS
2016 FREIGHTLINER Cascadia CA12564ST Conventional, 516,345 Miles, DD15 455 H.P. Detroit Engine, Engine Brake, 12 Speed Automated Transmission, 40,000 Lb. Rear Ends, Full Screw, 3.60 Ratio, Air Ride Suspension, 72 Inch Raised-Roof Walk-In Sleeper, Bunk Beds, Air Conditioned, Cruise Control, Hydraulic Power Steering, Stainless Steel Heated Power Mirrors, Dual High Back Air Ride Seats, Power Locks, Telescopic Tilt Wheel, Power Windows, Fuel Tank Fairings, Horizontal Exhaust, Side Extenders, Dual Aluminum Fuel Tanks, Auxiliary Bunk Heater, Quarter Fenders, Air Slide 5th with Ramps, 242 Inch Wheel Base, 22.5 Low Profile Tires, Aluminum Disc Wheels



2016 FREIGHTLINER

2016 FREIGHTLINER Cascadia CA12564ST Conventional, ISX 450ST Cummins Engine, Engine Brake, 10 Speed Transmission, 40,000 Lb. Rear Ends, Full Screw, 3.31 Ratio, Air Ride Suspension, 72 Inch Mid-Roof XT Sleeper Cab, Power Inverter, Air Conditioned, Cruise Control, Hydraulic Power Steering, Exterior Visor, Stainless Steel Heated Power Mirrors, Premium Interior, Dual High Back Air Ride Seats, Power Locks, Telescopic Tilt Wheel, Power Windows, Refrigerator, Thermo King Tri-Pac Auxiliary Power Unit, Horizontal Exhaust, Side Extenders, Dual Aluminum Fuel Tanks, Auxiliary Bunk Heater, Quarter Fenders, Air Slide 5th, 230 Inch Wheel Base, 22.5 Low Profile Tires, Aluminum Disc Wheels



2013 FREIGHTLINER

2013 FREIGHTLINER Cascadia CA12564ST Conventional, DD15 455 H.P. Detroit Engine DPF & DEF Deleted, Engine Brake, 10 Speed Transmission, 40,000 Lb. Rear Ends, Full Screw, 3.42 Ratio, Air Ride Suspension, 72 Inch Raised-Roof Walk-In Sleeper, Bunk Beds, Air Conditioned, Cruise Control, Deer Guard Bumper, Hydraulic Power Steering, Heated Power Mirrors, Premium Interior, Dual High Back Air Ride Seats, Telescopic Tilt Wheel, Power Windows, Fuel Tank Fairings, Horizontal Exhaust, Side Extenders, Dual Aluminum Fuel Tanks, Auxiliary Bunk Heater, Quarter Fenders, Stationary 5th, 228 Inch Wheel Base, 22.5 Low Profile, Disc Wheels, Aluminum Disc Front & Outside Rear



2012 FREIGHTLINER

2012 FREIGHTLINER Cascadia CA12564ST Conventional, DD15 455 H.P. DPF & DEF Deleted, Engine Brake, 10 Speed Transmission, 40,000 Lb. Rear Ends, Full Screw, 3.55 Ratio, Air Ride Suspension, 72 Inch Raised-Roof Walk-In Sleeper, Bunk Beds, Air Conditioned, Cruise Control, Deer Guard Bumper, Hydraulic Power Steering, Heated Power Mirrors, Premium Interior, Dual High Back Air Ride Seats, Telescopic Tilt Wheel, Power Windows, Horizontal Exhaust, Side Extenders, Wheel to Wheel Air Fairings, Dual Aluminum Fuel Tanks, Stationary 5th, 228 Inch Wheel Base, 22.5 Low Profile Tires, Disc Wheels, Aluminum Disc Front & Outside Rear



2014 FREIGHTLINER

2014 FREIGHTLINER Cascadia Evolution CA12564ST Conventional, DD15 455 H.P. Detroit Engine, Engine Brake, 9 Speed Transmission, 40,000 Lb. Rear Ends, Full Screw, 3.42 Ratio, Air Ride Suspension, 72 Inch Raised-Roof Walk-In Sleeper, Bunk Beds, Air Conditioned, Cruise Control, Hydraulic Power Steering, Heated Power Mirrors, Dual High Back Air Ride Seats, Telescopic Tilt Wheel, Power Windows, Fuel Tank Fairings, Horizontal Exhaust, Side Extenders, Dual Aluminum Fuel Tanks, Auxiliary Bunk Heater, Quarter Fenders, Air Slide 5th, 228 Inch Wheel Base, 11R22.5 Tires Front, 22.5 Low Profile Tires Rear, Aluminum Disc Wheels



2020 KENWORTH

KENWORTH T800S
2020 KENWORTH T800 Conventional, 504,803 Miles, X-15 500 H.P. Cummins Engine, Engine Brake, 10 Speed Transmission, 40,000 Lb. Rear Ends, Full Screw, 3.25 Ratio, Air Ride Suspension, 72 Inch Aerocab Walk-In Sleeper, Power Inverter, Air Conditioned, Aluminum Bumper, Cruise Control, Hydraulic Power Steering, Dual Spotlights, Stainless Steel Exterior Visor, Stainless Steel Heated Power Mirrors, Splendor Interior, Dual High Back Seats, Air Ride Driver's Seat, Power Locks, Telescopic Tilt Wheel, Power Windows, Flood Lights Rear of Cab, Single Chrome Stack, Dual Aluminum Fuel Tanks, Auxiliary Bunk Heater, Half Fenders, P.T.O. Disc Brakes, Adjustable 5th, 232 Inch Wheel Base, 22.5 Low Profile Tires, Aluminum Disc Wheels



2015 KENWORTH

2015 KENWORTH T800 Conventional, 655,500 Miles, ISX15 450 H.P. Cummins Engine with EGR & DPF Deleted, Engine Brake, 10 Speed Transmission, 40,000 Lb. Rear Ends, Full Screw, 3.70 Ratio, Air Ride Suspension, 38 Inch Flat-Top Aerocab Sleeper, Air Conditioned, Cruise Control, Deep Chrome Bumper, Hydraulic Power Steering, Stainless Steel Exterior Visor, Stainless Steel Heated Power Mirrors, Splendor Interior, Dual High Back Seats, Air Ride Driver's Seat, Power Locks, Power Right Hand Window, Telescopic Tilt Wheel, Dual Chrome Stacks, Dual Aluminum Fuel Tanks, Stainless Steel Quarter Fenders, P.T.O. Air Slide 5th, 232 Inch Wheel Base, 11R24.5 Tires, Aluminum Disc Wheels



2016 FREIGHTLINER

FREIGHTLINER CASCADIA EVOLUTIONS
2016 FREIGHTLINER Cascadia CA12564ST Conventional, DD15 455H.P. Detroit Engine, Engine Brake, 10 Speed Transmission, 40,000 Lb. Rear Ends, Full Screw, 3.31 Ratio, Air Ride Suspension, 72 Inch Mid-Roof XT Sleeper Cab, Power Inverter, Air Conditioned, Cruise Control, Hydraulic Power Steering, Heated Power Mirrors, Dual High Back Seats, Air Ride Driver's Seat, Power Locks, Power Windows, Horizontal Exhaust, Side Extenders, Dual Aluminum Fuel Tanks, Auxiliary Bunk Heater, Quarter Fenders, Air Slide 5th, 230 Inch Wheel Base, 11R22.5 Tires Front, 22.5 Low Profile Tires Rear, Aluminum Disc Wheels



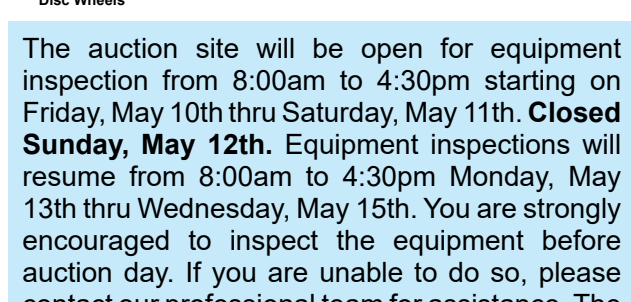
2014 FREIGHTLINER

2014 FREIGHTLINER Cascadia Evolution CA12564ST Conventional, DD15 455 H.P. Detroit Engine DPF & DEF Deleted, Engine Brake, 10 Speed Transmission, 40,000 Lb. Rear Ends, Full Screw, 3.42 Ratio, Air Ride Suspension, 72 Inch Raised-Roof Walk-In Sleeper, Bunk Beds, Air Conditioned, Cruise Control, Deer Guard Bumper, Hydraulic Power Steering, Heated Power Mirrors, Premium Interior, Dual High Back Air Ride Seats, Telescopic Tilt Wheel, Power Windows, Fuel Tank Fairings, Horizontal Exhaust, Side Extenders, Dual Aluminum Fuel Tanks, Auxiliary Bunk Heater, Quarter Fenders, Stationary 5th, 228 Inch Wheel Base, 22.5 Low Profile Tires, Disc Wheels, Aluminum Disc Front & Outside Rear



2014 FREIGHTLINER

2014 FREIGHTLINER Cascadia Evolution CA12564ST Conventional, DD15 455 H.P. Detroit Engine, Engine Brake, 9 Speed Transmission, 40,000 Lb. Rear Ends, Full Screw, 3.42 Ratio, Air Ride Suspension, 72 Inch Raised-Roof Walk-In Sleeper, Bunk Beds, Air Conditioned, Cruise Control, Hydraulic Power Steering, Heated Power Mirrors, Dual High Back Air Ride Seats, Telescopic Tilt Wheel, Power Windows, Fuel Tank Fairings, Horizontal Exhaust, Side Extenders, Dual Aluminum Fuel Tanks, Auxiliary Bunk Heater, Quarter Fenders, Air Slide 5th, 228 Inch Wheel Base, 11R22.5 Tires Front, 22.5 Low Profile Tires Rear, Aluminum Disc Wheels



2018 INTERNATIONAL

2018 INTERNATIONAL 9200 Conventional, M11 Plus 400 H.P. Cummins Engine, Engine Brake, 10 Speed Transmission, 40,000 Lb. Rear Ends, Full Screw, Air Ride Suspension, 73 Inch High-Rise Walk-In Sleeper, Air Conditioned, Cruise Control, Hydraulic Power Steering, Stainless Steel Exterior Visor, Stainless Steel Heated Mirrors with Power Right Mirror, Panel Lights, Dual High Back Air Ride Seats, Power Right Hand Window, Telescopic Tilt Wheel, Dual Chrome Stacks, Side Extenders, Dual Aluminum Fuel Tanks, Full Fenders, Air Slide 5th, 226 Inch Wheel Base, 11R22.5 Tires Front, 22.5 Low Profile Tires Rear, Disc Wheels, Aluminum Disc Front & Outside Rear



2013 VOLVO

VOLVO VNL64T-730
2013 VOLVO VNL64T-730 Conventional, D13 455 H.P. Volvo Engine, Engine Brake, 12 Speed I-Shift Automated Transmission, 40,000 Lb. Rear Ends, Full Screw, 3.25 Ratio, Air Ride Suspension, 253,000 Miles on Documented Premium Plus Engine Overhaul, 34,000 Miles on Documented Roman Transmission & Clutch, 77 Inch Mid-Roof Walk-In Sleeper, Bunk Beds, Power Inverter, Shore Power, Air Conditioned, Cruise Control, Deep Chrome Bumper, Hydraulic Power Steering, Exterior Visor, Stainless Steel Heated Power Mirrors, Panel Lights, Limited Interior, Dual High Back Air Ride Seats, Power Locks, Telescopic Tilt Wheel, Power Windows, Thermo King Tri-Pac Auxiliary Power Unit, Beacon Lights, Flood Lights Rear of Cab, Side Extenders, Single Chrome Stack, Wheel to Wheel Air Fairings, Dual Aluminum Fuel Tanks, Auxiliary Bunk Heater, Air Slide 5th, 241 Inch Wheel Base, 22.5 Low Profile Tires, Aluminum Disc Wheels



2020 INTERNATIONAL

INTERNATIONAL LONESTAR
2020 INTERNATIONAL Lonestar Conventional, ISX 455ST Cummins Engine with EGR Deleted, Engine Brake, 13 Speed Transmission, 40,000 Lb. Rear Ends, Full Screw, Air Ride Suspension, 73 Inch High-Rise Walk-In Sleeper, Bunk Beds, Air Conditioned, Cruise Control, Deep Chrome Bumper, Hydraulic Power Steering, Stainless Steel Exterior Visor, Stainless Steel Heated Power Mirrors, Dual High Back Seats, Air Ride Driver's Seat, Telescopic Tilt Wheel, Power Windows, Thermo King Tri-Pac Auxiliary Power Unit, Dual Chrome Stacks, Side Extenders, Dual Aluminum Fuel Tanks, Aluminum Saddle Box, Auxiliary Bunk Heater, Stainless Steel Quarter Fenders, Air Slide 5th, 250 Inch Wheel Base, 22.5 Low Profile Tires Front, 44550R22.5 Wide Base Tires Rear, Aluminum Disc Wheels



2015 INTERNATIONAL

INTERNATIONAL PROSTAR
2015 INTERNATIONAL Prostar Plus 122 Conventional, ISX15 450ST Cummins Engine, Engine Brake, 10 Speed Transmission, 40,000 Lb. Rear Ends, Full Screw, 3.42 Ratio, Air Ride Suspension, 73 Inch High-Rise Walk-In Sleeper, Bunk Beds, Power Inverter, Air Conditioned, Cruise Control, Hydraulic Power Steering, Air Faring, Exterior Visor, Heated Power Mirrors, Dual High Back Air Ride Seats, Power Locks, Telescopic Tilt Wheel, Flat Screen TV, Power Windows, Microwave, Refrigerator, Fuel Tank Fairings, Horizontal Exhaust, Side Extenders, Dual Aluminum Fuel Tanks, Aluminum Headache Rack, Auxiliary Bunk Heater, Quarter Fenders, Adjustable 5th, 224 Inch Wheel Base, 22.5 Low Profile Tires, Disc Wheels, Aluminum Disc Front



2018 INTERNATIONAL

INTERNATIONAL LT 625
2018 INTERNATIONAL LT 625 Conventional, 598,544 Miles, A26 450 H.P. International Engine, Engine Brake, 10 Speed Transmission, 40,000 Lb. Rear Ends, Full Screw, 3.21 Ratio, Air Ride Suspension, 73 Inch High-Rise Walk-In Sleeper, Air Conditioned, Cruise Control, Hydraulic Power Steering, Air Faring, Stainless Steel Heated Power Mirrors, Dual High Back Air Ride Seats, Power Locks, Telescopic Tilt Wheel, Power Windows, Horizontal Exhaust, Side Extenders, Dual Aluminum Fuel Tanks, Auxiliary Bunk Heater, Air Slide 5th, 228 Inch Wheel Base, 22.5 Low Profile Tires, Disc Wheels, Aluminum Disc Front



1998 INTERNATIONAL

INTERNATIONAL 9200
1998 INTERNATIONAL 9200 Conventional, M11 Plus 400 H.P. Cummins Engine, Engine Brake, 10 Speed Transmission, 40,000 Lb. Rear Ends, Full Screw, Air Ride Suspension, 73 Inch High-Rise Walk-In Sleeper, Air Conditioned, Cruise Control, Hydraulic Power Steering, Stainless Steel Exterior Visor, Stainless Steel Heated Mirrors with Power Right Mirror, Panel Lights, Dual High Back Air Ride Seats, Power Right Hand Window, Telescopic Tilt Wheel, Dual Chrome Stacks, Side Extenders, Dual Aluminum Fuel Tanks, Full Fenders, Air Slide 5th, 226 Inch Wheel Base, 11R22.5 Tires Front, 22.5 Low Profile Tires Rear, Disc Wheels, Aluminum Disc Front & Outside Rear



1998 CRONKWHITE

TAG TRAILER
1998 CRONKWHITE 24 Ft. Tag Trailer, 102 Inches Wide, 18 Ft. Bed by 81 Inches Inside, Wood Floor, Pintle Hook, Spare Tire with Rack, Spring Suspension, LT265/75R16 Tires, Disc Wheels



2020 FREIGHTLINER

FREIGHTLINER CASCADIA CA12564ST
2020 FREIGHTLINER CA12564ST Cascadia Conventional, DD15 455 H.P. Detroit Engine, Engine Brake, D17-12 Automated Transmission, 40,000 Lb. Rear Ends, Full Screw, 3.08 Ratio, Air Ride Suspension, Day Cab, Air Ride Cab, Air Conditioned, Cruise Control, Deep Chrome Bumper, Hydraulic Power Steering, Stainless Steel Heated Power Mirrors, Dual High Back Seats, Air Ride Driver's Seat, Telescopic Tilt Wheel, Power Door Locks, Power Windows, Esprit Bunk Heater, Horizontal Exhaust, Side Extenders, Dual Aluminum Fuel Tanks, Quarter Fenders, Air Slide 5th, 180 Inch Wheel Base, 22.5 Low Profile Tires, Disc Wheels, Aluminum Disc Front & Outside Rear (Noise In Engine)



2018 FREIGHTLINER

2018 FREIGHTLINER Cascadia CA12564ST Conventional, 596,212 Miles, DD13 450 H.P. Detroit Engine, Engine Brake, D17-12 Automated Transmission, 40,000 Lb. Rear Ends, Full Screw, 3.07 Ratio, Air Ride Suspension, Day Cab, Air Ride Cab, Air Conditioned, Cruise Control, Deer Guard Bumper, Hydraulic Power Steering, Exterior Visor, Stainless Steel Heated Power Mirrors, Premium Interior, Dual High Back Seats, Air Ride Driver's Seat, Telescopic Tilt Wheel, Power Windows, Side Extenders, Single Chrome Stack, Single Aluminum Fuel Tank, Merritt Aluminum Saddle Box, Half Fenders, P.T.O. Disc Brakes, Air Slide 5th, 200 Inch Wheel Base, 11R22.5 Tires, Aluminum Disc Wheels



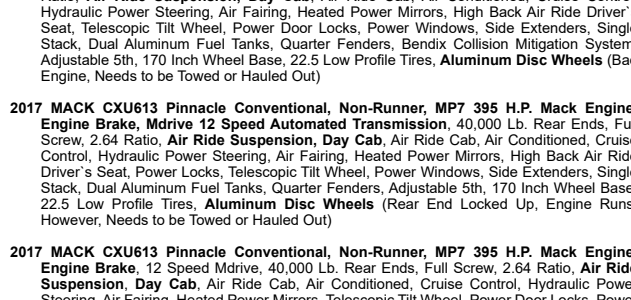
2011 FREIGHTLINER

2011 FREIGHTLINER Cascadia CA12564ST Conventional, DD13 450 H.P. Detroit Engine with EGR & DPF Deleted, Engine Brake, 10 Speed Transmission, 40,000 Lb. Rear Ends, Full Screw, 3.70 Ratio, Air Ride Suspension, Day Cab, Air Ride Cab, Air Conditioned, Cruise Control, Deep Chrome Bumper, Hydraulic Power Steering, Air Faring, Exterior Visor, Heated Power Mirrors, Dual High Back Seats, Air Ride Driver's Seat, Power Locks, Power Windows, Single Chrome Stack, Dual Aluminum Fuel Tanks, Quarter Fenders, Air Slide 5th, 178 Inch Wheel Base, 11R22.5 Tires Front, 22.5 Low Profile Tires Rear, Disc Wheels



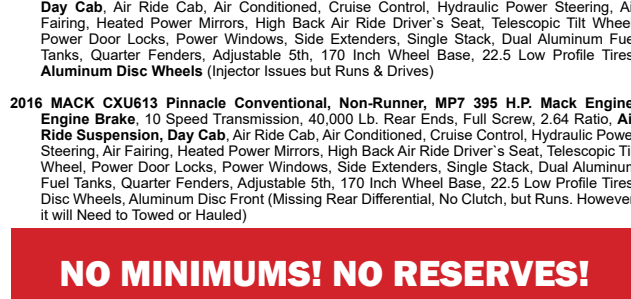
2016 FREIGHTLINER

FREIGHTLINER CASCADIA CA11364ST
2016 FREIGHTLINER Cascadia CA11364ST Conventional, DD13 410 H.P. Detroit Engine, Engine Brake, 10 Speed Transmission, 40,000 Lb. Rear Ends, Full Screw, 2.53 Ratio, Air Ride Suspension, Day Cab, Air Ride Cab, Air Conditioned, Cruise Control, Hydraulic Power Steering, Air Faring, Heated Power Mirrors, Dual High Back Seats, Air Ride Driver's Seat, Telescopic Tilt Wheel, Power Windows, Side Extenders, Single Stack, Dual Aluminum Fuel Tanks, Quarter Fenders, Bendix Collision Mitigation System, Air Slide 5th, 168 Inch Wheel Base, 22.5 Low Profile Tires, Aluminum Disc Wheels



2017 MACK

MACK CXU613 PINNACLES
2017 MACK CXU613 Pinnacle Conventional, Non-Runner, MP7 395 H.P. Mack Engine, Engine Brake, 12 Speed Drive Transmission, 40,000 Lb. Rear Ends, Full Screw, 2.64 Ratio, Air Ride Suspension, Day Cab, Air Ride Cab, Air Conditioned, Cruise Control, Hydraulic Power Steering, Air Faring, Heated Power Mirrors, High Back Air Ride Driver's Seat, Telescopic Tilt Wheel, Power Windows, Side Extenders, Single Stack, Dual Aluminum Fuel Tanks, Quarter Fenders, Bendix Collision Mitigation System, Adjustable 5th, 170 Inch Wheel Base, 22.5 Low Profile Tires, Aluminum Disc Wheels (Bad Engine, Needs to be Towed or Hauled Out)



2017 MACK

MACK CXU613 Pinnacle Conventional, Non-Runner, MP7 395 H.P. Mack Engine, Engine Brake, 12 Speed Drive Transmission, 40,000 Lb. Rear Ends, Full Screw, 2.64 Ratio, Air Ride Suspension, Day Cab, Air Ride Cab, Air Conditioned, Cruise Control, Hydraulic Power Steering, Air Faring, Heated Power Mirrors, High Back Air Ride Driver's Seat, Telescopic Tilt Wheel, Power Door Locks, Power Windows, Side Extenders, Single Stack, Dual Aluminum Fuel Tanks, Quarter Fenders, Adjustable 5th, 170 Inch Wheel Base, 22.5 Low Profile Tires, Disc Wheels, Aluminum Disc Front (Missing Rear Differential, No Clutch, but Runs. However, it will Need to be Towed or Hauled)



2000 PETERBILT

PETERBILT 379 EXTENDED HOOD
2000 PETERBILT 379 Extended Hood Ultra Cab, 3406E 550 H.P. Caterpillar Engine, Engine Brake, 13 Speed Transmission, 40,000 Lb. Rear Ends, Full Screw, 4.11 Ratio, Air Ride Suspension, Day Cab, Air Ride Cab, Air Conditioned, Cruise Control, Deep Chrome Bumper, Hydraulic Power Steering, Stainless Steel Heated Power Mirrors, Dual Stainless Steel Air Cleaners, Panel Lights, American Classics Interior, Dual Air Ride Seats, High Back Driver's Seat, Telescopic Tilt Wheel, Power Windows, Beacon Lights, Dual Aluminum Fuel Tanks, 2 Line Wet-Line Kit, P.T.O. Aluminum Oil Tank, Stainless Steel Heated Powered Extendable Mirrors, Protect Three Door Aluminum Headache Rack, Air Up/Down Pusher Axle with 22.5 Low Profile Tires, Aluminum Disc Wheels



2016 VOLVO

VOLVO VNL64T-300
2016 VOLVO VNL64T-300 Conventional, D13 405 H.P. Volvo Engine, Engine Brake, 12 Speed I-Shift Automated Transmission, 40,000 Lb. Rear Ends, Full Screw, 3.25 Ratio, Air Ride Suspension, Day Cab, Air Ride Cab, Air Conditioned, Cruise Control, Hydraulic Power Steering, Air Faring, Exterior Visor, Heated Power Mirrors, Dual High Back Seats, Air Ride Driver's Seat, Telescopic Tilt Wheel, Power Windows, Side Extenders, Single Stack, Dual Aluminum Fuel Tanks, Quarter Fenders, Air Slide 5th, 185 Inch Wheel Base, 22.5 Low Profile Tires, Disc Wheels, Aluminum Disc Front (Transmission Problem, Does Run & Drive)



2003 FREIGHTLINER

FREIGHTLINER COLUMBIA
2003 FREIGHTLINER Columbia CL12064ST Conventional, C-12 410 H.P. Caterpillar Engine, Engine Brake, 10 Speed Transmission, 40,000 Lb. Rear Ends, Full Screw, 3.73 Ratio, Air Ride Suspension, Day Cab, Air Ride Cab, Air Conditioned, Cruise Control, Deep Chrome Bumper, Hydraulic Power Steering, Exterior Visor, Stainless Steel Heated Mirrors with Power Right Mirror, Admiral Interior, Dual High Back Seats, Air Ride Driver's Seat, Telescopic Tilt Wheel, Power Windows, Side Extenders, Single Stack, Dual Aluminum Fuel Tanks, Quarter Fenders, P.T.O. Driver Controlled Full-Locking Differential, Air Slide 5th, 186 Inch Wheel Base, 22.5 Low Profile Tires, Disc Wheels, Aluminum Disc Front & Outside Rear



2006 KENWORTH

KENWORTH T300
2006 KENWORTH T300 Conventional, ISX 450 H.P. Cummins Engine, Allison Automatic Transmission, 23,000 Lb. Rear End, Single Axle, 5.38 Ratio, Air Ride Suspension, 5 Window Cab, 10,915 Lb. Empty Weight, Day Cab, Air Conditioned, Cruise Control, Deep Chrome Bumper, Hydraulic Power Steering, Stainless Steel Heated Power Mirrors, Daylight Doors, Dual High Back Seats, Air Ride Driver's Seat, Power Right Hand Window, Telescopic Tilt Wheel, Horizontal Exhaust, Aluminum Fuel Tank, Quarter Fenders, Stationary 5th, 150 Inch Wheel Base, 22.5 Low Profile Tires, Disc Wheels, Aluminum Disc Front (Transmission Issue - Runs & Drives)



2006 STERLING

STERLING ACTERRA
2006 STERLING Acterra Conventional, 198,205 Miles, MBE 900 280 H.P. Mercedes Engine, Allison Automatic Transmission, 23,000 Lb. Rear End, Single Axle, Spring Suspension, Day Cab, Air Conditioned, Cruise Control, Deep Chrome Bumper, Hydraulic Power Steering, Stainless Steel Heated Power Mirrors, High Back Air Ride Driver's Seat, Telescopic Tilt Wheel, Power Left Hand Window, Horizontal Exhaust, Aluminum Fuel Tank, Stainless Steel Quarter Fenders, Stationary 5th, 152 Inch Wheel Base, 22.5 Low Profile Tires Front, 11R22.5 Tires Rear, Disc Wheels, Aluminum Disc Front & Outside Rear



2007 INTERNATIONAL

INTERNATIONAL 8500
2007 INTERNATIONAL 8500 Conventional, HT570 International Engine, Allison Automatic Transmission, 23,000 Lb. Rear End, Single Axle, Spring Suspension, Day Cab, Air Ride Cab, Air Conditioned, Cruise Control, Hydraulic Power Steering, Heated Mirrors, Dual High Back Seats, Air Ride Driver's Seat, Power Windows, Telescopic Tilt Wheel, Power Windows, Horizontal Exhaust, Dual Fuel Tanks, Adjustable 5th, 150 Inch Wheel Base, 22.5 Low Profile Tires, Disc Wheels

**NO MINIMUMS! NO RESERVES!
NO BUY BACKS!**

The auction site will be open for equipment inspection from 8:00am to 4:30pm starting on Friday, May 10th thru Saturday, May 11th. Closed Sunday, May 12th. Equipment inspections will resume from 8:00am to 4:30pm Monday, May 13th thru Wednesday, May 15th. You are strongly encouraged to inspect the equipment before auction day. If you are unable to do so, please contact our professional team for assistance. The auction site is closed on auction day, Thursday, May 16th.

