

TRAILERS

9:00 AM CDT

THURSDAY • MAY 25, 2017

MILAN, ILLINOIS

1001 E 1st Avenue



P.O. Box 5444 • Rock Island, IL 61204

RETURN SERVICE REQUESTED
FIRST CLASS

TRUCK TRACTORS, STRAIGHT TRUCKS, TRAILERS

ABSOLUTE PUBLIC AUCTION



ACCOMMODATIONS
La Quinta Inn & Suites 309.762.9008
Hampton Inn 309.762.1900

AIRLINES & RENTAL CARS
The Quad City International Airport is located at the South edge of Moline, IL and serves both commercial and private aircraft. Major airlines include: United, American, Delta, and Allegiant. Rental car agencies include: Hertz 800.654.3131; National 800.227.7368; Budget 800.527.0700; Avis 800.331.1800.

ORDER OF SALE
Truck Tractors will be sold first followed by straight trucks and miscellaneous vehicles. Trailers will be sold last.



TERMS

Complete payment is due the day of the auction by cash or certified check. Personal or company checks are accepted IF accompanied by a bank letter guaranteeing payment. In addition, first time buyers must provide a letter of recognition from their banker prior to registering, specifically authorizing U.S. Auctioneers to contact their banker in reference to their ability to pay for purchases.

All buyers intending to pay for their purchases in cash are required to make a \$1000 deposit in order to register for the auction. All checks are made payable to US Auctioneers, Inc. A 5% Buyer's Premium will be added to the purchase price! All purchases are subject to verification with your financial institution. Picture ID required. Titles will be mailed.

The buyer shall take full responsibility and assume all risk of loss for said equipment or property from the time the Auctioneer accepts the final bid from the buyer.

POSSESSION OF EQUIPMENT
IMMEDIATE POSSESSION OF EQUIPMENT UPON PROPER SETTLEMENT ONLY AS NOTED ABOVE! Personal or company checks NOT accompanied by a bank letter guaranteeing payment must be verified and all wire transfers received before possession of equipment will be given!

Important Equipment Removal Procedure!
Equipment can be picked up between 8:00 am and 5:00 pm from the auction day until Monday, May 29, including Saturday & Sunday. After Monday, all equipment will be moved to a secured storage lot where there will be a \$50 per piece charge for transportation & one month storage. This fee must be paid before equipment can be removed.

ABSOLUTE AUCTION
All equipment is sold "AS IS, WHERE IS." All equipment is sold to the highest bidder with no bid-in or reserves. The condition of the equipment is expressed by the owners and no warranty or guarantee is expressed or implied. The buyer will be required to pay for purchases regardless of their faults. This brochure is subject to additions or deletions and is only a guide to the equipment listed on this auction. Announcements made the day of the auction will take precedence over any printed or electronic material.

AUCTION SITE DIRECTIONS

The auction will be held at 1001 E 1st Avenue Milan, Illinois. Take I-280 to Milan/Airport Road Exit (Exit 15). Turn West and the Auction Site Entrance will be on the North side of the road.



No Reserves!

No Buy Backs!

AUCTIONEER'S NOTE
This ABSOLUTE PUBLIC AUCTION includes equipment from several fleet owners and owner/operators who are selling equipment as a part of their replacement programs or in order to reduce the size of their operations. This auction offers an excellent opportunity to purchase a wide variety of well-maintained truck tractors, trucks, and trailers. Maintenance histories will be posted on vehicles where provided by owners.

MAKE PLANS TO ATTEND THIS AUCTION TODAY!

1-800-992-2893
Beginning Monday, May 22, Call:
Auction Phone 309.756.0693
Auction Fax 309.756.0975
www.usauctioneers.com
info@usauctioneers.com

Online bidding is available thru EquipmentFacts. To register and bid online, visit www.equipmentfacts.com

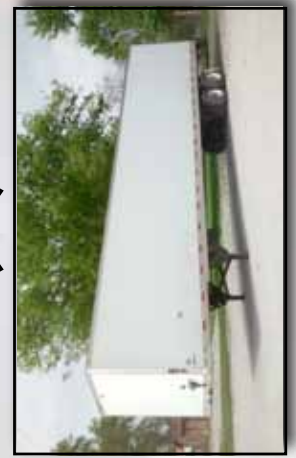


5% Buyer's Premium
Illinois Auction License No. 444.000265
For up-to-date equipment list and pictures, visit our website at www.usauctioneers.com

ABSENTEE & CELLULAR BIDDING
Absentee & Cellular bidding will be handled on a first come, first serve basis. Registration will be done by fax machine and must be completed by 12:00 Noon on Wednesday, May 24.



TRUCK TRACTORS STRAIGHT TRUCKS TRAILERS



USA Auctioneers Inc.
800-992-2893



ABSOLUTE PUBLIC AUCTION!



48 Ft. FLATBEDS

2004 TRANSCRAFT Eagle II 48 Ft. Aluminum Combination Flatbed, 102 Inches High, Aluminum Floor with Four Nail Strips, Aluminum Storage Rack, Winch Rail with Winches, Sliding Tandem, Spring Suspension, 255/70R22.5 Aluminum Disc Wheels

2007 GREAT DANE 48 Ft. Aluminum Combination Flatbed, 102 Inches High, 48 Inch Bulkhead, 4 Nail Strips, Air Release Sliding Tandem, Air Ride Suspension, 22.5 Low Profile Radial Tires, Disc Wheels

2006 FONTAINE 48 Ft. Aluminum Combination Flatbed, 102 Inches High, Aluminum Floor with Four Nail Strips, Aluminum Storage Rack, Winch Rail with Winches, Sliding Tandem, Spring Suspension, 255/70R22.5 Aluminum Disc Wheels

53 Ft. FLATBED
1997 WILSON Road Brute 53 Ft. Aluminum Combination Flatbed, 102 Inches High, Wood Floor, Double Pipe Spoils, Sliding Winches, 10 Ft. 1 Inch Spread Axle, Air Ride Suspension with Dump Valve, 22.5 Low Profile Radial Tires, Disc Wheels

2006 TRANSCRAFT 48 Ft. Aluminum Combination Drop Deck, 102 Inches High, 10 Ft. Top Deck, 20 Inch Drop, 37 Ft. Main Deck, Aluminum Floor with Four Nail Strips, Sparer Bars, Winch Rail with Winches, Chain Tie Downs, 10 Ft. 1 Inch Spread Axle, Air Ride Suspension, 22.5 Low Profile Radial Tires, Aluminum Disc Wheels

DROP DECKS
2006 TRANSCRAFT 48 Ft. Aluminum Combination Drop Deck, 102 Inches High, 10 Ft. Top Deck, 20 Inch Drop, 37 Ft. Main Deck, Aluminum Floor with Four Nail Strips, Sparer Bars, Winch Rail with Winches, Chain Tie Downs, 10 Ft. 1 Inch Spread Axle, Air Ride Suspension, 22.5 Low Profile Radial Tires, Aluminum Disc Wheels

1999 DYNAWELD 48 Ft. Drop Deck, 102 Inches High, Self-Contained Hydraulics, 21 HP Gasoline Engine, 11 Ft. Top Deck, 37 Ft. Main Deck, Wood Floor, D-Ring Tie Downs, 3 Ft. Hydraulic Folding Bumper, 3 Ft. Hydraulic Folding Rear Ramp, Air Ride Suspension, 17.5 Low Profile Radial Tires, Disc Wheels

1993 FEATHERLITE 48 Ft. Aluminum Combination Drop Deck, 102 Inches High, 11 Ft. Top Deck, 20 Inch Drop, 37 Ft. Main Deck, 4 Nail Strips, Double Pipe Spoils, 20 Aluminum Storage Boxes, 10 Ft. 1 Inch Spread Axle, Air Ride Suspension, 22.5 Low Profile Radial Tires, Aluminum Disc Wheels

1978 HOBBS 48 Ft. Drop Deck, 96 Inches High, 12 Ft. Top Deck, 20 Inch Drop, 33 Ft. Main Deck, Wood Floor, Spring Suspension, 255/70R22.5 Disc Wheels, Aluminum Disc Outside

2000 NATIONAL TILT BED MACHINERY TRAILER
2000 NATIONAL 48 Ft. Hydraulic Tilt Bed Machinery Trailer, 102 Inches High, 48 Inch Mesh Bulkhead, 10 Ft. 6 Inch Top Deck, 37 Ft. 6 Inch Main Deck, Steel Floor, Floor Tie Downs, Hydraulic Winch Front, Hydraulic Levelers Rear, Storage Boxes, Sliding Axles, Air Ride Suspension, 17.5 Low Profile Radial Tires, Disc Wheels

CONESTOGA DROP DECK
2000 TALBERT 80K 48 Ft. Conestoga Drop Deck, 102 Inches High, 13 Ft. 6 Inches High, Aluminum Bulkhead, Conestoga 2000 Tarping System, 11 Ft. Top Deck, 19 Inch Drop, 37 Ft. Main Deck, Wood Floor, 18 Inch Rear Door Opening, Aluminum Storage Box, 10 Ft. 1 Inch Spread Axle, Air Ride Suspension with Manual Dump Valve & Air Weight Gauge, 255/70R22.5 Disc Wheels

INSULATED VAN WITH REEFER UNIT
2005 WABASH 53 Ft. Insulated Aluminum Van, 102 Inches High, 13 Ft. 6 Inches High, 110 Inch Door Opening, Thermo King Unit, Bulkhead, Double Row E Track, Plywood Lined, Cold Chute, Aluminum Scaff Plate, Threshold Plate, Swing Doors, Dual Cam Locks, Sliding Tandem, Air Ride Suspension, 22.5 Low Profile Radial Tires, Disc Wheels, Aluminum Disc Outside

2010 GREAT DANE 53 Ft. Aluminum Reefer, 102 Inches High, 13 Ft. 6 Inches High, Carrier Unit, Bulkhead, Stainless Steel Front Corners, White Lined, Cold Chute, Aluminum Scaff Plate, Rear Vent, Stainless Steel Door Frame & Buck Plate, Stainless Steel Swing Doors, Dual Cam Locks, Under Trailer Wind Deflector, Dock Locks, Air Release Sliding Tandem, Air Ride Suspension, 22.5 Low Profile Radial Tires, Aluminum Disc Outside

2004 GREAT DANE 53 Ft. Aluminum Reefer, 102 Inches High, 13 Ft. 6 Inches High, Carrier Unit, Bulkhead, White Lined, Cold Chute, Aluminum Scaff Plate, Stainless Steel Door Frame & Buck Plate, Swing Doors, Sliding Tandem, Air Ride Suspension, 22.5 Low Profile Radial Tires, Disc Wheels, Aluminum Disc Outside

2007 GREAT DANE 53 Ft. Aluminum Reefer, 102 Inches High, 13 Ft. 6 Inches High, Carrier Unit, Bulkhead, White Lined, Cold Chute, Aluminum Scaff Plate, Stainless Steel Door Frame & Buck Plate, Swing Doors, Sliding Tandem, Air Ride Suspension, 22.5 Low Profile Radial Tires, Disc Wheels, Aluminum Disc Outside

2007 UTILITY 300R 53 Ft. Aluminum Reefer, 102 Inches High, 13 Ft. 6 Inches High, Thermo King Unit, Bulkhead, Stainless Steel Front Corners, White Lined, Cold Chute, Aluminum Scaff Plate, Rear Vent, Stainless Steel Door Frame & Buck Plate, Stainless Steel Swing Doors, Dual Cam Locks, Under Trailer Wind Deflector, Dock Locks, Air Release Sliding Tandem, Air Ride Suspension, 22.5 Low Profile Radial Tires, Aluminum Disc Outside

2007 UTILITY 300R 53 Ft. Aluminum Reefer, 102 Inches High, 13 Ft. 6 Inches High, Thermo King Unit, Bulkhead, Stainless Steel Front Corners, White Lined, Cold Chute, Aluminum Scaff Plate, Rear Vent, Stainless Steel Door Frame & Buck Plate, Stainless Steel Swing Doors, Dual Cam Locks, Under Trailer Wind Deflector, Dock Locks, Air Release Sliding Tandem, Air Ride Suspension, 22.5 Low Profile Radial Tires, Aluminum Disc Outside

2004 UTILITY 53 Ft. Aluminum Reefer, 102 Inches High, 13 Ft. 6 Inches High, Thermo King Unit, Bulkhead, White Lined, Cold Chute, Aluminum Scaff Plate, Stainless Steel Door Frame & Buck Plate, Stainless Steel Swing Doors, Sliding Tandem, Air Ride Suspension, 22.5 Low Profile Radial Tires, Disc Wheels, Aluminum Disc Outside

2004 UTILITY 53 Ft. Aluminum Reefer, 102 Inches High, 13 Ft. 6 Inches High, Thermo King Unit, Bulkhead, White Lined, Cold Chute, Aluminum Scaff Plate, Stainless Steel Door Frame & Buck Plate, Stainless Steel Swing Doors, Sliding Tandem, Air Ride Suspension, 22.5 Low Profile Radial Tires, Disc Wheels, Aluminum Disc Outside

2004 UTILITY 53 Ft. Aluminum Reefer, 102 Inches High, 13 Ft. 6 Inches High, Thermo King Unit, Bulkhead, White Lined, Cold Chute, Aluminum Scaff Plate, Stainless Steel Door Frame & Buck Plate, Stainless Steel Swing Doors, Sliding Tandem, Air Ride Suspension, 24.5 Low Profile Radial Tires, Disc Wheels

2004 UTILITY 53 Ft. Aluminum Reefer, 102 Inches High, 13 Ft. 6 Inches High, Thermo King Unit, Bulkhead, White Lined, Cold Chute, Aluminum Scaff Plate, Stainless Steel Door Frame & Buck Plate, Stainless Steel Swing Doors, Sliding Tandem, Air Ride Suspension, 22.5 Low Profile Radial Tires, Disc Wheels, Aluminum Disc Outside

53 Ft. VANS

2016 HYUNDAI 53 Ft. Aluminum Van, 102 Inches High, 13 Ft. 6 Inches High, 110 Inch Door Opening, Aluminum Roof, Composite Lining Panels, Logistics Posts, Scuff Plate, Threshold Plate, Front & Rear Vents, Galvanized Door Frame & Buck Plate, Swing Doors, Galvanized ICC Bumper, Dock Locks, Air Release Sliding Tandem, Air Ride Suspension with Air Weight Gauge, Tire Inflation System, 22.5 Low Profile Radial Tires, Disc Wheels

2009 UTILITY 4000X 53 Ft. Composite Van, 102 Inches High, 13 Ft. 6 Inches High, Aluminum Roof, Composite Lining, Logistics Posts, Scuff Plate, Threshold Plate, Stainless Steel Door Frame & Buck Plate, Swing Doors, Dock Locks, Air Release Sliding Tandem, Air Ride Suspension, 22.5 Low Profile Radial Tires, Disc Wheels

2007 WABASH 53 Ft. DuraPlate Van, 102 Inches High, 13 Ft. 6 Inches High, 110 Inch Door Opening, Translucent Roof, Plywood Lined, Logistics Posts, Scuff Plate, Threshold Plate, Swing Doors, Sliding Tandem, Air Ride Suspension, 22.5 Low Profile Radial Tires, Disc Wheels

2007 WABASH 53 Ft. DuraPlate Van, 102 Inches High, 13 Ft. 6 Inches High, 110 Inch Door Opening, Translucent Roof, Plywood Lined, Logistics Posts, Scuff Plate, Threshold Plate, Swing Doors, Sliding Tandem, Air Ride Suspension, 22.5 Low Profile Radial Tires, Disc Wheels

2007 TRAILMOBILE 53 Ft. Ultra-Plate Van, 102 Inches High, 13 Ft. 6 Inches High, Aluminum Roof, Logistics Equipment, Aluminum Scuff Plate, Threshold Plate, Galvanized Door Frame & Buck Plate, Swing Doors, Galvanized ICC Bumper, Sliding Tandem, Air Ride Suspension, 22.5 Low Profile Radial Tires, Disc Wheels

2006 WABASH 53 Ft. Aluminum Van, 102 Inches High, 13 Ft. 6 Inches High, 110 Inch Door Opening, Aluminum Roof, Plywood Lined, Logistics Posts, Scuff Plate, Threshold Plate, Swing Doors, Sliding Tandem, Air Ride Suspension, 22.5 Low Profile Radial Tires, Disc Wheels

2005 WABASH 53 Ft. DuraPlate HD Van, 102 Inches High, 13 Ft. 6 Inches High, 110 Inch Door Opening, Translucent Roof, Logistics Equipment, Scuff Plate, Threshold Plate, Stainless Steel Door Frame & Buck Plate, Swing Doors, Stainless Steel ICC Bumper, Sliding Tandem, Air Ride Suspension, Meritor Tire Inflation System, 22.5 Low Profile Radial Tires, Disc Wheels

2005 WABASH 53 Ft. Aluminum Van, 102 Inches High, 13 Ft. 6 Inches High, 110 Inch Door Opening, Aluminum Roof, Plywood Lined, Logistics Posts, Scuff Plate, Swing Doors, Sliding Tandem, Air Ride Suspension, 22.5 Low Profile Radial Tires, Disc Wheels

2005 WABASH 53 Ft. Aluminum Van, 102 Inches High, 13 Ft. 6 Inches High, 110 Inch Door Opening, Aluminum Roof, Plywood Lined, Logistics Posts, Scuff Plate, Swing Doors, Sliding Tandem, Air Ride Suspension, 22.5 Low Profile Radial Tires, Disc Wheels

2003 GREAT DANE 53 Ft. Aluminum Van, 102 Inches High, 13 Ft. 6 Inches High, Translucent Roof, Plywood Lined, Logistics Posts, Scuff Plate, Front & Rear Vents, Swing Doors, Dual Cam Locks, Dock Locks, Sliding Tandem, Air Ride Suspension, 22.5 Low Profile Radial Tires, Disc Wheels

2003 WABASH 53 Ft. Aluminum Van, 102 Inches High, 13 Ft. 6 Inches High, 110 Inch Door Opening, Aluminum Roof, Logistics Posts, Scuff Plate, Swing Doors, Dual Cam Locks, Sliding Tandem, Air Ride Suspension, 22.5 Low Profile Radial Tires, Disc Wheels

2002 GREAT DANE 53 Ft. Aluminum Plate Van, 102 Inches High, 13 Ft. 6 Inches High, High Translucent Roof, Logistics Equipment, Scuff Plate, Threshold Plate, Swing Doors, Dual Cam Locks, Sliding Tandem, Air Ride Suspension, 22.5 Low Profile Radial Tires, Disc Wheels

2002 TRAILMOBILE 53 Ft. Aluminum Van, 102 Inches High, 13 Ft. 6 Inches High, Aluminum Roof, Composite Lining, Logistics Posts, Aluminum Scuff Plate, Threshold Plate, Swing Doors, Sliding Tandem, Air Ride Suspension, 22.5 Low Profile Radial Tires, Disc Wheels

2013 CTS 46 Ft. 6 Inch Steel Belly Dump, 96 Inches High, 60 Inch Sides with 10 Inch Extensions, Rocking Upper Coupler, Front Ladder, Drop Legs, Clam Gates, Front & Rear Fenders, Push Bumper, Spring Suspension, Tri-Axle, 11R24.5 Disc Wheels

2007 CTS 46 Ft. 6 Inch Steel Belly Dump, 96 Inches High, 60 Inch Sides with 10 Inch Extensions, Rocking Upper Coupler, Front Ladder, Drop Legs, Clam Gates, Front & Rear Fenders, Push Bumper, Spring Suspension, Tri-Axle, 11R24.5 Disc Wheels

1998 CBI 42 Ft. Steel Belly Dump, 96 Inches High, 54 Inch Sides, Rocking Upper Coupler, Drop Legs, Clam Gates, Push Bumper, Spring Suspension, Tri-Axle, 11R22.5 Disc Wheels

1993 LOAD KING 38 Ft. Steel Belly Dump, 102 Inches High, 48 Inch Sides, Rocking Upper Coupler, Drop Legs, Clam Gates, Front & Rear Fenders, Push Bumper, Spring Suspension, Tri-Axle, 11R22.5 Disc Wheels

1977 LOAD KING 37 Ft. Steel Belly Dump, 96 Inches High, 50 Inch Sides with 12 Inch Extensions, Drop Legs, Clam Gates, Front & Rear Fenders, Spring Suspension, 11R22.5 Spokes

2010 CHEVROLET Equinox SUV, 2.4 Liter 4 Cylinder Ecotec Gas Engine, Automatic Transmission, Front Wheel Drive, 4-Door, Remote Start, Backup Camera, Fog Lights, Air Conditioned, Cruise Control, Power Steering, Power Driver's Seat, Power Mirrors, Cloth Interior, Power Windows, Tire Wheel, Power Door Locks, Sun Roof, Luggage Rack, 18 Inch Tires, Alloy Disc Wheels

1999 BUICK LeSabre Limited Automobile, 3.8 Liter V-6 Gas Engine, Automatic Transmission, 4-Door, Remote Keyless Entry, Leather Interior, Power Mirrors, Power Windows, Tilt Wheel, Power Door Locks

1998 BUICK Park Avenue Automobile, 3.8 Liter Gas Engine, Automatic Transmission, 4-Door, Leather Interior, Power Windows, Tilt Wheel, Heated Seats, Power Door Locks, Aluminum Disc Wheels

1996 BUICK Regal Automobile, 3800 V-6 Gas Engine, Automatic Transmission, Cruise Control, Power Steering, Power Mirrors, Power Windows, Tilt Wheel, Leather Seats, Power Door Locks, 15 Inch Tires, Aluminum Disc Wheels

1988 FORD F250 Get-Away Conversion Van, 5.0 Liter V-8 Gas Engine, Automatic Transmission, Extended Cab, Air Conditioned, Cruise Control, Power Steering, SLT Interior, Tilt Wheel, Sliding Rear Window, Aluminum Storage Box, Reese Hitch with Electric, 15 Inch Tires, Aluminum Disc Wheels

2002 DODGE Dakota Pick Up, 3.9 Liter V-6 Gas Engine, Automatic Transmission, Extended Cab, Air Conditioned, Cruise Control, Power Steering, SLT Interior, Tilt Wheel, Sliding Rear Window, Aluminum Storage Box, Reese Hitch with Electric, 15 Inch Tires, Aluminum Disc Wheels

2001 DODGE Dakota Pick Up, V-6 Gas Engine, Automatic Transmission, 4-Door Quad Cab, 4-Wheel Drive, Air Conditioned, Power Steering, SLT Interior, Aluminum Disc Wheels

1974 HUDSON 19 Ft. Tag Trailer, 96 Inches High, 10 Ft. Deck, Wood Floor, D-Ring Tie Downs, 30 Inch Beavertail, 5 Ft. Ramps Rear, Spring Suspension, 8x14.5 Spokes

2001 UTILITY 53 Ft. Aluminum Van, 102 Inches High, 13 Ft. 6 Inches High, Aluminum Roof, Front Vent, Plywood Lined, Logistics Equipment, Scuff Plate, Threshold Plate, Stainless Steel Door Frame & Buck Plate, Swing Doors, Sliding Tandem, Air Ride Suspension, 22.5 Low Profile Radial Tires, Disc Wheels

2001 UTILITY 53 Ft. Aluminum Van, 102 Inches High, 13 Ft. 6 Inches High, Translucent Roof, E Track, White Lined, Threshold Plate, Stainless Steel Door Frame & Buck Plate, Swing Doors, Sliding Tandem, Air Ride Suspension, 22.5 Low Profile Radial Tires, Disc Wheels

2001 GREAT DANE 53 Ft. Aluminum Van, 102 Inches High, 13 Ft. 6 Inches High, 110 Inch Door Opening, Translucent Roof, Plywood Lined, Logistics Posts, Scuff Plate, Threshold Plate, Swing Doors, Sliding Tandem, Air Ride Suspension, 22.5 Low Profile Radial Tires, Disc Wheels

2001 STOUGHTON 53 Ft. Aluminum Van, 102 Inches High, 13 Ft. 6 Inches High, 110 Inch Door Opening, Translucent Roof, Double Row E Track, Rear, Plywood Lined, Scuff Board, Swing Doors, Sliding Tandem, Air Ride Suspension, 22.5 Low Profile Radial Tires, Disc Wheels

2001 WABASH 53 Ft. DuraPlate Van, 102 Inches High, 13 Ft. 6 Inches High, Translucent Roof, Fork Truck Package, Logistics Posts, Scuff Plate, Threshold Plate, Swing Doors, Sliding Tandem, Air Ride Suspension, 24.5 Low Profile Radial Tires, Disc Wheels

2000 WABASH 53 Ft. Aluminum Plate Van, 102 Inches High, 13 Ft. 6 Inches High, Translucent Roof, Logistics Equipment, Threshold Plate, Front & Rear Vents, Swing Doors, Sliding Tandem, Air Ride Suspension, 22.5 Low Profile Radial Tires, Disc Wheels

1999 GREAT DANE 53 Ft. Aluminum Van, 102 Inches High, 13 Ft. 6 Inches High, 110 Inch Door Opening, Aluminum Roof, Plywood Lined, Scuff Plate, Swing Doors, Sliding Tandem, Air Ride Suspension, 22.5 Low Profile Radial Tires, Disc Wheels

1998 WABASH 53 Ft. Aluminum Van, 102 Inches High, 13 Ft. 6 Inches High, Translucent Roof, Logistics Equipment, Scuff Plate, Threshold Plate, Swing Doors, Sliding Tandem, Air Ride Suspension, 22.5 Low Profile Radial Tires, Disc Wheels

1998 STOUGHTON 53 Ft. Aluminum Van, 102 Inches High, 13 Ft. 6 Inches High, Aluminum Roof, Logistics Posts, Scuff Plate, Threshold Plate, Swing Doors, Air Ride Suspension, 22.5 Low Profile Radial Tires, Disc Wheels

1998 WABASH 53 Ft. DuraPlate Van, 102 Inches High, 13 Ft. 6 Inches High, Translucent Roof, Logistics Equipment, Scuff Plate, Threshold Plate, Swing Doors, Sliding Tandem, Air Ride Suspension, 22.5 Low Profile Radial Tires, Disc Wheels

1997 STRICK 53 Ft. Aluminum Van, 102 Inches High, 13 Ft. 6 Inches High, Aluminum Roof, Logistics Posts, Scuff Plate, Threshold Plate, Swing Doors, Dual Cam Locks, Sliding Tandem, Air Ride Suspension with Dump Valve, 22.5 Low Profile Radial Tires, Disc Wheels

1995 WABASH 53 Ft. Aluminum Plate Van, 102 Inches High, 13 Ft. 6 Inches High, Aluminum Roof, Threshold Plate, Swing Doors, Dual Cam Locks, Sliding Tandem, Spring Suspension, 22.5 Low Profile Radial Tires, Disc Wheels

1994 STOUGHTON 53 Ft. Aluminum Van, 102 Inches High, 13 Ft. 6 Inches High, High Aluminum Roof, Threshold Plate, Swing Doors, Sliding Tandem, Spring Suspension, 22.5 Low Profile Radial Tires, Disc Wheels

1993 STRICK 53 Ft. Aluminum Van, 102 Inches High, 13 Ft. 6 Inches High, Aluminum Roof, Plywood Lined, Scuff Plate, Threshold Plate, Swing Doors, Aluminum Roof, Plywood Lined, Scuff Plate, Threshold Plate, Swing Doors, Aluminum Disc Outside

1986 WABASH 53 Ft. Aluminum Plate Van, 102 Inches High, 13 Ft. 6 Inches High, Aluminum Roof, Logistics Equipment, Threshold Plate, Stainless Steel Swing Doors, Sliding Tandem, Weight Gauge, Spring Suspension, 24.5 Low Profile Radial Tires, Disc Wheels

1986 FRUEHAUF 48 Ft. Aluminum Open Top Walking Floor, 96 Inches High, 96 Inch Sides, Plywood Lined, Tarp, Rear Ladder, Stainless Steel Swing Doors, Spring Suspension, 22.5 Low Profile Radial Tires, Disc Wheels

1978 FRUEHAUF 48 Ft. Open Top Van, 96 Inches High, 13 Ft. High, Steel Mesh Swing Doors, Sliding Tandem, Spring Suspension, 11R22.5 Spokes

2003 HILBILT 53 Ft. Reefer
2003 HILBILT 21 Ft. Frameless Steel End Dump, 96 Inches High, 56 Inch Sides, Electric Roll Tarp, Air Tail Gate, Spring Suspension, 11R22.5 Spokes

FRAMELESS ALUMINUM END DUMP
1988 BENSON 53 Ft. Frameless Aluminum End Dump, 96 Inches High, 56 Inch Sides, 66 Inch Sides, Shut-LoK Roll Tarp, Two Way Air Tail Gate, Coal Chute, 10 Ft. 2 Inch Spread Axle, Air Ride Suspension with Dump Valve, 11R24.5 Aluminum Disc Wheels

2017 TIGER 2017 TIGER 32 Ft. Gooseneck Flatbed, 102 Inches High, 14,000 Lb. GVWR, Never Hauled + Load, 9 Ft. Gooseneck, 21 Ft. Main Deck, Wood Floor, Drive Over Wheel Wells, 3 Ft. Beavertail, 2 Storage Boxes, Rear Ramp Channel, Tandem Axle, Spring Suspension, 16 Inch Tires, Disc Wheels

UTILITY TRAILERS
2016 PARKER Performance 17 Ft. 2 Inch Utility Trailer, 72 Inches High, 2,895 Lb. GVWR, 3 Ft. 2 Inch Tongue, 14 Ft. Deck, 59 1/2 Inch Inside Width, Wood Floor, 4 Ft. Rear Ramp, Spring Suspension, 15 Inch Tires, Disc Wheels
2016 PARKER Performance 12 Ft. 2 Inch Utility Trailer, 72 Inches High, 1,560 Lb. GVWR, 3 Ft. 2 Inch Tongue, 9 Ft. Deck, 54 Inch Inside Width, Wood Floor, 3 Ft. Rear Ramp, Spring Suspension, 4.80-12 Disc Wheels

MISCELLANEOUS
Two Series 60 12.7 Liter Detroit Core Engines
25 Binders *25 Chains *4 New Chains
3 Aluminum Step Side Boxes
12 New Firestone 24.5 Low Profile Radial Trailer Tires
2 New Firestone 22.5 Low Profile Radial Trailer Tires
2 Pallets of Beveled Coil Lumber
3 New Barrels of Chevron Synthetic 75-90 Gear Oil

