

TRACTORS



2019 FREIGHTLINER

FREIGHTLINER CA12664ST CASCADIA
2019 FREIGHTLINER CA12664ST Cascadia Conventional, 374,547 Miles, DD15 400 H.P. Detroit Engine, Engine Brake, DT12 12 Speed Automated Transmission, 40,000 Lb. Rear Ends, Full Screw, 3.58 Ratio, Air Ride Suspension, Park Smart Electric HVAC Unit, Navtec Onboard Powertrain Management System, Wabco Safety Mitigation System, 72 Inch Raised-Roof Walk-In Sleeper, Bunk Beds, Air Conditioned, Cruise Control, Deep Chrome Bumper, Hydraulic Power Steering, Stainless Steel Exterior, Vinyl, Stainless Steel Heated Power Mirrors, Premium Interior, Dual High Back Air Ride Seats, Telescopic Tilt Wheel, Power Windows, Fuel Tank Fairings, Horizontal Exhaust, Side Extenders, Dual Aluminum Fuel Tanks, Auxiliary Bunk Heater, Quarter Fenders, Stationary/Air Release 5th, 225 Inch Wheel Base, 22.5 Low Profile Tires, Disc Wheels, Aluminum Disc Front & Outside Rear



2018 FREIGHTLINER

FREIGHTLINER CA12564ST CASCADIA
2018 FREIGHTLINER CA12564ST Cascadia Evolution Conventional, 565,027 Miles, DD13 450 H.P. Detroit Engine, Engine Brake, 12 Speed Automated Transmission, 40,000 Lb. Rear Ends, Full Screw, 3.08 Ratio, Air Ride Suspension, Mentor Wabco Collision Mitigation System, 72 Inch Mid-Roof XT Sleeper Cab, Power Inverter, Shore Power, Air Conditioned, Cruise Control, Hydraulic Power Steering, Stainless Steel Heated Power Mirrors, Premium Interior, Dual High Back Air Ride Seats, Telescopic Tilt Wheel, Power Door Locks, Power Windows, Fuel Tank Fairings, Horizontal Exhaust, Side Extenders, Dual Aluminum Fuel Tanks, Auxiliary Bunk Heater, Stainless Steel Quarter Fenders, Air Side 5th, 230 Inch Wheel Base, 445/50R22.5 Wide Base Tires Rear, 22.5 Low Profile Tires Front, Aluminum Disc Wheels



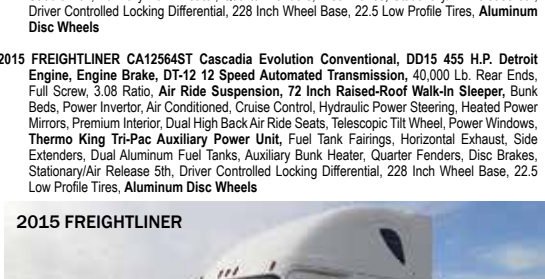
2016 FREIGHTLINER

FREIGHTLINER CA12564ST CASCADIA
2016 FREIGHTLINER CA12564ST Cascadia Evolution Conventional, 695,017 Miles, DD15 475 H.P. Detroit Engine, Engine Brake, 12 Speed Automated Transmission, 40,000 Lb. Rear Ends, Full Screw, 3.08 Ratio, Air Ride Suspension, Mentor Wabco Collision Mitigation System, Optimized Idle, 72 Inch Raised-Roof Walk-In Sleeper, Bunk Beds, Power Inverter, Shore Power, Air Conditioned, Cruise Control, Hydraulic Power Steering, Stainless Steel Heated Power Mirrors, Premium Interior, Dual High Back Air Ride Seats, Telescopic Tilt Wheel, Power Door Locks, Power Windows, Fuel Tank Fairings, Horizontal Exhaust, Side Extenders, Dual Aluminum Fuel Tanks, Auxiliary Bunk Heater, Stainless Steel Quarter Fenders, Air Side 5th, 230 Inch Wheel Base, 445/50R22.5 Wide Base Tires Rear, 22.5 Low Profile Tires Front, Aluminum Disc Wheels



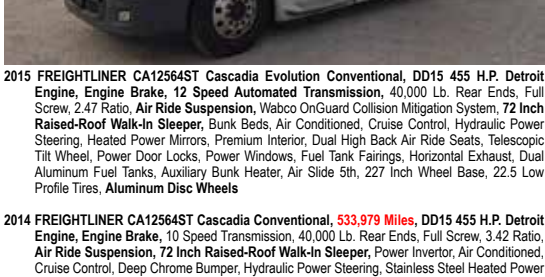
2015 FREIGHTLINER

FREIGHTLINER CA12564ST CASCADIA
2015 FREIGHTLINER CA12564ST Cascadia Evolution Conventional, 625,176 Miles, DD15 445 H.P. Detroit Engine, Engine Brake, DT-12 12 Speed Automated Transmission, 40,000 Lb. Rear Ends, Full Screw, 3.08 Ratio, Air Ride Suspension, 72 Inch Raised-Roof Walk-In Sleeper, Bunk Beds, Power Inverter, Air Conditioned, Cruise Control, Hydraulic Power Steering, Heated Power Mirrors, Premium Interior, Dual High Back Air Ride Seats, Telescopic Tilt Wheel, Power Windows, Thermo King Tri-Pac Auxiliary Power Unit, Fuel Tank Fairings, Horizontal Exhaust, Side Extenders, Dual Aluminum Fuel Tanks, Auxiliary Bunk Heater, Quarter Fenders, Disc Brakes, Stationary/Air Release 5th, Driver Controlled Locking Differential, 228 Inch Wheel Base, 22.5 Low Profile Tires, Aluminum Disc Wheels



2015 FREIGHTLINER

FREIGHTLINER CA12564ST CASCADIA
2015 FREIGHTLINER CA12564ST Cascadia Evolution Conventional, DD15 455 H.P. Detroit Engine, Engine Brake, DT-12 12 Speed Automated Transmission, 40,000 Lb. Rear Ends, Full Screw, 3.08 Ratio, Air Ride Suspension, 72 Inch Raised-Roof Walk-In Sleeper, Bunk Beds, Power Inverter, Air Conditioned, Cruise Control, Hydraulic Power Steering, Heated Power Mirrors, Premium Interior, Dual High Back Air Ride Seats, Telescopic Tilt Wheel, Power Windows, Thermo King Tri-Pac Auxiliary Power Unit, Fuel Tank Fairings, Horizontal Exhaust, Side Extenders, Dual Aluminum Fuel Tanks, Auxiliary Bunk Heater, Quarter Fenders, Disc Brakes, Stationary/Air Release 5th, Driver Controlled Locking Differential, 228 Inch Wheel Base, 22.5 Low Profile Tires, Aluminum Disc Wheels



2014 FREIGHTLINER

FREIGHTLINER CA12564ST CASCADIA
2014 FREIGHTLINER CA12564ST Cascadia Conventional, 533,379 Miles, DD15 445 H.P. Detroit Engine, Engine Brake, 10 Speed Transmission, 40,000 Lb. Rear Ends, Full Screw, 3.42 Ratio, Air Ride Suspension, Day Cab, Air Ride Cab, Air Conditioned, Cruise Control, Deep Chrome Bumper, Hydraulic Power Steering, Exterior, Vinyl, Stainless Steel Heated Power Mirrors, Premium Interior, Dual High Back Air Ride Seats, Telescopic Tilt Wheel, Power Door Locks, Power Windows, Fuel Tank Fairings, Horizontal Exhaust, Side Extenders, Dual Aluminum Fuel Tanks, Auxiliary Bunk Heater, Quarter Fenders, Air Side 5th, 227 Inch Wheel Base, 22.5 Low Profile Tires, Aluminum Disc Wheels



2014 FREIGHTLINER

FREIGHTLINER CA12564ST CASCADIA
2014 FREIGHTLINER CA12564ST Cascadia Conventional, DD15 455 H.P. Detroit Engine, Engine Brake, 10 Speed Transmission, 40,000 Lb. Rear Ends, Full Screw, 3.42 Ratio, Air Ride Suspension, 72 Inch Raised-Roof Walk-In Sleeper, Power Inverter, Air Conditioned, Cruise Control, Hydraulic Power Steering, Stainless Steel Heated Power Mirrors, Premium Interior, Dual High Back Air Ride Seats, Telescopic Tilt Wheel, Power Door Locks, Power Windows, Thermo King Tri-Pac Auxiliary Power Unit, Fuel Tank Fairings, Horizontal Exhaust, Side Extenders, Dual Aluminum Fuel Tanks, Auxiliary Bunk Heater, Quarter Fenders, Stationary 5th, 225 Inch Wheel Base, 22.5 Low Profile Tires, Aluminum Disc Wheels



1999 FREIGHTLINER

FREIGHTLINER CLASSIC
1999 FREIGHTLINER Classic Conventional, Series 60 12.7 Liter 500 H.P. Detroit Engine, Engine Brake, 13 Speed Transmission, 40,000 Lb. Rear Ends, Full Screw, 3.55 Ratio, Air Ride Suspension, 62 Inch Raised-Roof Walk-In Sleeper, Air Conditioned, Cruise Control, Deep Chrome Bumper, Hydraulic Power Steering, Stainless Steel Exterior, Vinyl, Stainless Steel Heated Power Mirrors, Dual Stainless Steel Air Cleaners, Panel Lights, Dual High Back Air Ride Seats, Power Right Hand Window, Telescopic Tilt Wheel, Refrigerator, Dual Chrome Stacks, Dual Aluminum Fuel Tanks, Auxiliary Bunk Heater, Stainless Steel Quarter Fenders, Air Side 5th, 255 Inch Wheel Base, 24.5 Low Profile Tires, Disc Wheels, Aluminum Disc Front & Outside Rear



2014 FREIGHTLINER

GLIDER KITS
FREIGHTLINER CL12064ST COLUMBIAS
2014 FREIGHTLINER CL12064ST Columbia Glider Kit, Series 60 12.7 Liter 430/470 H.P. Detroit Engine, Engine Brake, 10 Speed Transmission, 40,000 Lb. Rear Ends, Full Screw, 2.93 Ratio, Air Ride Suspension, 70 Inch Mid-Roof XT Sleeper Cab, Air Conditioned, Cruise Control, Hydraulic Power Steering, Exterior, Vinyl, Heated Mirrors with Power Right Mirror, Adminal Interior, Dual High Back Seats, Air Ride Driver's Seat, Power Right Hand Window, Telescopic Tilt Wheel, Side Extenders, Single Chrome Stack, Dual Aluminum Fuel Tanks, Stainless Steel Quarter Fenders, Air Side 5th, 232 Inch Wheel Base, 11R22.5 Tires, Disc Wheels, Aluminum Disc Front & Outside Rear



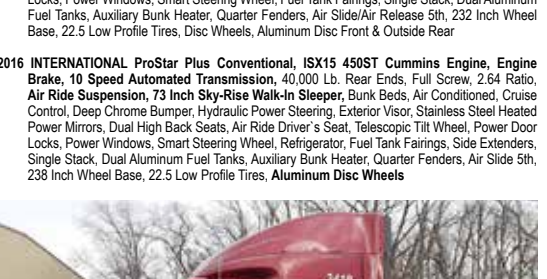
2012 FREIGHTLINER

FREIGHTLINER CL12064ST COLUMBIA
2012 FREIGHTLINER CL12064ST Columbia Glider Kit, Series 60 12.7 Liter 430/470 H.P. Detroit Engine, Engine Brake, 12 Speed Automated Transmission, 40,000 Lb. Rear Ends, Full Screw, 3.42 Ratio, Air Ride Suspension, 70 Inch Mid-Roof XT Sleeper Cab, Bunk Beds, Air Conditioned, Cruise Control, Hydraulic Power Steering, Air Faring, Side Extenders, Exterior Vinyl, Stainless Steel Heated Mirrors with Power Right Mirror, Adminal Interior, Dual High Back Air Ride Seats, Telescopic Tilt Wheel, Power Windows, Single Stack, Stainless Steel Quarter Fenders, 4 Aluminum Fuel Tanks, Air Side 5th, 230 Inch Wheel Base, 22.5 Low Profile Tires Rear, 11R22.5 Tires Front, Disc Wheels, Aluminum Disc Front & Outside Rear



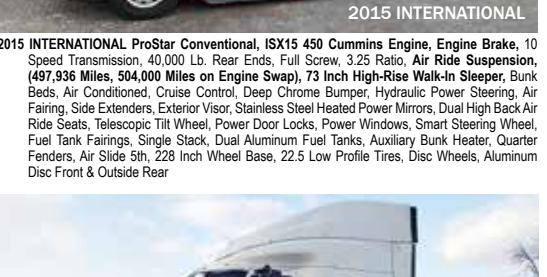
2016 INTERNATIONAL

INTERNATIONAL PROSTAR
2016 INTERNATIONAL ProStar Conventional, 410,626 Miles, ISX15 415ST Cummins Engine, Engine Brake, 10 Speed Automatic Transmission Without Clutch Pedal, 40,000 Lb. Rear Ends, Full Screw, 2.64 Ratio, Air Ride Suspension, 73 Inch Sky-Rise Walk-In Sleeper, Air Conditioned, Cruise Control, Hydraulic Power Steering, Air Faring, Side Extenders, Exterior Vinyl, Stainless Steel Heated Mirrors with Power Right Mirror, Adminal Interior, Dual High Back Air Ride Seats, Telescopic Tilt Wheel, Power Door Locks, Power Windows, Smart Steering Wheel, Refrigerator, Fuel Tank Fairings, Side Extenders, Single Stack, Dual Aluminum Fuel Tanks, Auxiliary Bunk Heater, Quarter Fenders, Air Side 5th, 230 Inch Wheel Base, 22.5 Low Profile Tires, Disc Wheels, Aluminum Disc Front & Outside Rear



2016 INTERNATIONAL

INTERNATIONAL PROSTAR PLUS
2016 INTERNATIONAL ProStar Plus Conventional, ISX15 450ST Cummins Engine, Engine Brake, 10 Speed Automated Transmission, 40,000 Lb. Rear Ends, Full Screw, 2.64 Ratio, Air Ride Suspension, 73 Inch Sky-Rise Walk-In Sleeper, Bunk Beds, Air Conditioned, Cruise Control, Deep Chrome Bumper, Hydraulic Power Steering, Exterior Vinyl, Stainless Steel Heated Power Mirrors, Premium Interior, Dual High Back Air Ride Seats, Telescopic Tilt Wheel, Power Door Locks, Power Windows, Smart Steering Wheel, Refrigerator, Fuel Tank Fairings, Side Extenders, Single Stack, Dual Aluminum Fuel Tanks, Auxiliary Bunk Heater, Quarter Fenders, Air Side 5th, 230 Inch Wheel Base, 22.5 Low Profile Tires, Aluminum Disc Wheels



2015 INTERNATIONAL

INTERNATIONAL PROSTAR
2015 INTERNATIONAL ProStar Conventional, ISX15 450 Cummins Engine, Engine Brake, 10 Speed Transmission, 40,000 Lb. Rear Ends, Full Screw, 3.25 Ratio, Air Ride Suspension, 73 Inch Sky-Rise Walk-In Sleeper, Bunk Beds, Air Conditioned, Cruise Control, Deep Chrome Bumper, Hydraulic Power Steering, Exterior Vinyl, Stainless Steel Heated Power Mirrors, Premium Interior, Dual High Back Air Ride Seats, Telescopic Tilt Wheel, Power Door Locks, Power Windows, Smart Steering Wheel, Refrigerator, Fuel Tank Fairings, Side Extenders, Single Stack, Dual Aluminum Fuel Tanks, Auxiliary Bunk Heater, Quarter Fenders, Air Side 5th, 227 Inch Wheel Base, 22.5 Low Profile Tires, Aluminum Disc Wheels



2010 INTERNATIONAL

INTERNATIONAL PROSTAR
2010 INTERNATIONAL ProStar Conventional, ISX 435ST Cummins Engine, Engine Brake, 10 Speed Transmission, 40,000 Lb. Rear Ends, Full Screw, 3.25 Ratio, Air Ride Suspension, 72 Inch High-Rise Walk-In Sleeper, Air Conditioned, Cruise Control, Hydraulic Power Steering, Air Faring, Side Extenders, Exterior Vinyl, Stainless Steel Heated Power Mirrors, Dual High Back Air Ride Seats, Telescopic Tilt Wheel, Power Door Locks, Power Windows, Fuel Tank Fairings, Horizontal Exhaust, Side Extenders, Dual Aluminum Fuel Tanks, Auxiliary Bunk Heater, Quarter Fenders, Air Side 5th, 228 Inch Wheel Base, 22.5 Low Profile Tires, Disc Wheels, Aluminum Disc Front & Outside Rear



2004 KENWORTH

KENWORTH W900
2004 KENWORTH W900 Conventional, C-15 175 H.P. Caterpillar Engine, Engine Brake, 13 Speed Transmission, 40,000 Lb. Rear Ends, Full Screw, 3.55 Ratio, Air Ride Suspension, 42 Inch Flat-Top Ski-Down Sleeper, Air Conditioned, Cruise Control, Deep Chrome Bumper, Hydraulic Power Steering, Stainless Steel Exterior, Vinyl, Stainless Steel Heated Power Mirrors, VIT Interior, Dual High Back Air Ride Seats, Telescopic Tilt Wheel, Rear Window, Dual Chrome Stacks, Dual Aluminum Fuel Tanks, Auxiliary Bunk Heater, Stainless Steel Half Fenders, Hydro Pak Wet Line Kit, Aluminum Storage Box, Adjustable 5th, 225 Inch Wheel Base, 22.5 Low Profile Tires, Aluminum Disc Wheels



2015 KENWORTH

KENWORTH T680s
2015 KENWORTH T680 Conventional, MX13 455 H.P. Paccar Engine, Engine Brake, 10 Speed Advantage Automated Transmission, 40,000 Lb. Rear Ends, Full Screw, 2.93 Ratio, Air Ride Suspension, 76 Inch High-Roof Walk-In Sleeper, Bunk Beds, Power Inverter, Air Conditioned, Cruise Control, Deep Chrome Bumper, Hydraulic Power Steering, Heated Power Mirrors, Ventage Interior, Dual High Back Air Ride Seats, Telescopic Tilt Wheel, Power Door Locks, Power Windows, Thermo King Tri-Pac Auxiliary Power Unit, Fuel Tank Fairings, Horizontal Exhaust, Side Extenders, Dual Aluminum Fuel Tanks, Aluminum Saddle Box, Auxiliary Bunk Heater, Stainless Steel Quarter Fenders, Disc Brakes, Swing Away Passenger Seat & Table, Driver Controlled Locking Differential, Adjustable 5th, 232 Inch Wheel Base, 22.5 Low Profile Tires, Aluminum Disc Wheels



2016 KENWORTH

KENWORTH T680
2016 KENWORTH T680 Conventional, MX13 455 H.P. Paccar Engine, Engine Brake, 10 Speed Ultra Shift Plus Automated Transmission, 40,000 Lb. Rear Ends, Full Screw, 3.25 Ratio, Air Ride Suspension, Day Cab, Air Ride Cab, Air Conditioned, Cruise Control, Deep Chrome Bumper, Hydraulic Power Steering, Exterior Vinyl, Heated Power Mirrors, Premium Interior, Dual High Back Seats, Air Ride Driver's Seat, Telescopic Tilt Wheel, Power Windows, Single Chrome Stack, Aluminum Fuel Tank, Aluminum Saddle Box, Half Fenders, QTO, Disc Brakes, Air Side 5th, 200 Inch Wheel Base, 11R22.5 Tires, Aluminum Disc Wheels



2015 KENWORTH

KENWORTH T680
2015 KENWORTH T680 Conventional, MX13 455 H.P. Paccar Engine, Engine Brake, 10 Speed Transmission, 40,000 Lb. Rear Ends, Full Screw, 3.25 Ratio, Air Ride Suspension, 76 Inch High-Roof Walk-In Sleeper, Power Inverter, Air Conditioned, Cruise Control, Hydraulic Power Steering, Heated Power Mirrors, Dual High Back Air Ride Seats, Telescopic Tilt Wheel, Power Door Locks, Power Windows, Refrigerator, Carrier Auxiliary Power Unit, Fuel Tank Fairings, Horizontal Exhaust, Side Extenders, Dual Aluminum Fuel Tanks, Quarter Fenders, Air Side 5th, 230 Inch Wheel Base, 22.5 Low Profile Tires, Aluminum Disc Wheels



2014 KENWORTH

KENWORTH T680
2014 KENWORTH T680 Conventional, MX13 455 H.P. Paccar Engine, Engine Brake, 13 Speed Ultra Shift Automated Transmission, 40,000 Lb. Rear Ends, Full Screw, 3.25 Ratio, Air Ride Suspension, 76 Inch High-Roof Walk-In Sleeper, Bunk Beds, Power Inverter, Air Conditioned, Cruise Control, Hydraulic Power Steering, Heated Power Mirrors, Vantage Interior, Dual High Back Air Ride Seats, Telescopic Tilt Wheel, Power Door Locks, Power Windows, Thermo King Tri-Pac Auxiliary Power Unit, Fuel Tank Fairings, Horizontal Exhaust, Side Extenders, Dual Aluminum Fuel Tanks, Aluminum Saddle Box, Auxiliary Bunk Heater, Stainless Steel Quarter Fenders, Disc Brakes, Swing Away Passenger Seat & Table, Driver Controlled Locking Differential, Adjustable 5th, 232 Inch Wheel Base, 22.5 Low Profile Tires, Aluminum Disc Wheels



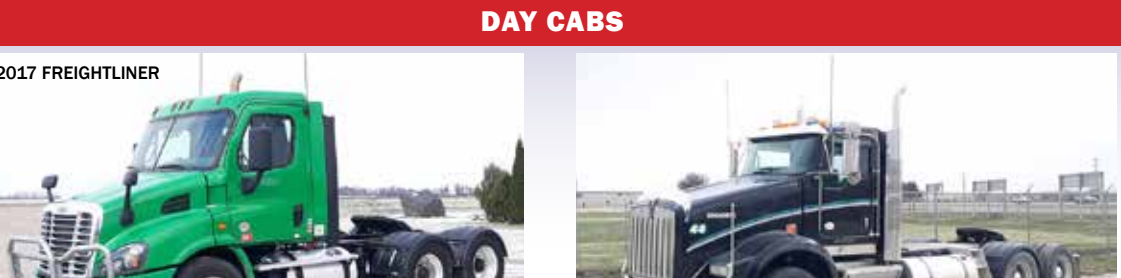
2013 PETERBILT

PETERBILT 587
2013 PETERBILT 587 Conventional, ISX15 450ST Cummins Engine, Engine Brake, 10 Speed Transmission, 40,000 Lb. Rear Ends, Full Screw, 3.42 Ratio, Air Ride Suspension, 75 Inch High-Rise Walk-In Sleeper, Bunk Beds, Air Conditioned, Cruise Control, Hydraulic Power Steering, Exterior Vinyl, Stainless Steel Heated Power Mirrors, Dual High Back Air Ride Seats, Telescopic Tilt Wheel, Thermo King Tri-Pac Auxiliary Power Unit, Fuel Tank Fairings, Horizontal Exhaust, Side Extenders, Dual Aluminum Fuel Tanks, Auxiliary Bunk Heater, Stainless Steel Quarter Fenders, Air Side 5th, 236 Inch Wheel Base, 22.5 Low Profile Tires, Aluminum Disc Wheels



2016 VOLVO

VOLVO VNL647-780
2016 VOLVO VNL647-780 Conventional, ISX15 450ST Cummins Engine, Engine Brake, 10 Speed Ultra Shift Automated Transmission, 40,000 Lb. Rear Ends, Full Screw, 2.64 Ratio, Air Ride Suspension, 77 Inch Hi-Rise Walk-In Sleeper with Work Station, Bunk Beds, Power Inverter, Air Conditioned, Cruise Control, Hydraulic Power Steering, Exterior Vinyl, Stainless Steel Heated Power Mirrors, Limited Interior, Dual High Back Air Ride Seats, Telescopic Tilt Wheel, Power Door Locks, Power Windows, Thermo King Tri-Pac Auxiliary Power Unit, Horizontal Exhaust, Side Extenders, Dual Aluminum Fuel Tanks, Auxiliary Bunk Heater, Stainless Steel Quarter Fenders, Aluminum Storage Box, Disc Brakes, Air Side/Air Release 5th, Driver Controlled Locking Differential, 233 Inch Wheel Base, 22.5 Low Profile Tires, Aluminum Disc Wheels



2017 FREIGHTLINER

FREIGHTLINER CA11364ST
2017 FREIGHTLINER CA11364ST Cascadia Conventional, DD13 410 H.P. Detroit Engine, Engine Brake, DT12 12 Speed Automated Transmission, 20,000 Lb. Rear Ends, Single Axle with Air Ride Tag Aids, 3.2 Ratio, Air Ride Suspension, Wabco Collision Safety System, Day Cab, Air Ride Cab, Air Conditioned, Cruise Control, Deep Chrome Bumper, Hydraulic Power Steering, Exterior Vinyl, Stainless Steel Heated Power Mirrors, Premium Interior, Dual High Back Air Ride Seats, Telescopic Tilt Wheel, Power Door Locks, Power Windows, Fuel Tank Fairings, Horizontal Exhaust, Side Extenders, Single Stack, Auxiliary Bunk Heater, Quarter Fenders, Tire Inflation System, Adjustable 5th, 164 Inch Wheel Base, 22.5 Low Profile Tires, Disc Wheels



2016 FREIGHTLINER

FREIGHTLINER CA12564ST
2016 FREIGHTLINER CA12564ST Cascadia Conventional, DD13 455 H.P. Detroit Engine, Engine Brake, 10 Speed Transmission, 40,000 Lb. Rear Ends, Full Screw, 3.42 Ratio, Air Ride Suspension, Day Cab, Air Ride Cab, Air Conditioned, Cruise Control, Deep Chrome Bumper, Hydraulic Power Steering, Exterior Vinyl, Heated Power Mirrors, Premium Interior, Dual High Back Seats, Air Ride Driver's Seat, Telescopic Tilt Wheel, Power Windows, Single Chrome Stack, Aluminum Fuel Tank, Aluminum Saddle Box, Half Fenders, QTO, Disc Brakes, Air Side 5th, 200 Inch Wheel Base, 11R22.5 Tires, Aluminum Disc Wheels



2016 FREIGHTLINER

FREIGHTLINER CA12564ST
2016 FREIGHTLINER CA12564ST Cascadia Evolution Conventional, DD13 435 H.P. Detroit Engine, Engine Brake, 10 Speed Transmission, 40,000 Lb. Rear Ends, Full Screw, 3.42 Ratio, Air Ride Suspension, Day Cab, Air Ride Cab, Air Conditioned, Cruise Control, Deep Chrome Bumper, Hydraulic Power Steering, Exterior Vinyl, Heated Power Mirrors, Premium Interior, Dual High Back Seats, Air Ride Driver's Seat, Telescopic Tilt Wheel, Power Windows, Single Chrome Stack, Aluminum Fuel Tank, Aluminum Saddle Box, Half Fenders, QTO, Disc Brakes, Air Side 5th, 200 Inch Wheel Base, 11R22.5 Tires, Aluminum Disc Wheels



2014 FREIGHTLINER

FREIGHTLINER CA12564ST
2014 FREIGHTLINER CA12564ST Cascadia Evolution Conventional, DD15 455 H.P. Detroit Engine, Engine Brake, 10 Speed Automated Transmission, 40,000 Lb. Rear Ends, Full Screw, 3.42 Ratio, Air Ride Suspension, Day Cab, Air Ride Cab, Air Conditioned, Cruise Control, Deep Chrome Bumper, Hydraulic Power Steering, Exterior Vinyl, Heated Power Mirrors, Premium Interior, Dual High Back Seats, Air Ride Driver's Seat, Telescopic Tilt Wheel, Power Windows, Single Chrome Stack, Aluminum Fuel Tank, Aluminum Saddle Box, Half Fenders, QTO, Disc Brakes, Air Side 5th, 200 Inch Wheel Base, 11R22.5 Tires, Aluminum Disc Wheels



2009 FREIGHTLINER

FREIGHTLINER CA12564ST
2009 FREIGHTLINER CA12564ST Cascadia Conventional, DD15 455 H.P. Detroit Engine, Engine Brake, 10 Speed Transmission, 40,000 Lb. Rear Ends, Full Screw, 3.58 Ratio, Air Ride Suspension, Day Cab, Air Ride Cab, Air Conditioned, Cruise Control, Deep Chrome Bumper, Hydraulic Power Steering, Exterior Vinyl, Stainless Steel Heated Power Mirrors, Premium Interior, Dual High Back Seats, Air Ride Driver's Seat, Telescopic Tilt Wheel, Power Windows, Single Chrome Stack, Aluminum Fuel Tank, Aluminum Saddle Box, Half Fenders, Automatic Grease Lubrication System, QTO, Air Side/Air Release 5th, 200 Inch Wheel Base, 11R22.5 Tires, Aluminum Disc Wheels



2014 FREIGHTLINER

GLIDER KIT
FREIGHTLINER CL12064ST COLUMBIA
2014 FREIGHTLINER CL12064ST Columbia Glider Kit, 613,642 Miles, MBE 4000 450 H.P. Mercedes Engine, Engine Brake, 10 Speed Transmission, 40,000 Lb. Rear Ends, Full Screw, 3.58 Ratio, Air Ride Suspension, Day Cab, Air Ride Cab, Air Conditioned, Cruise Control, Hydraulic Power Steering, Exterior Vinyl, Stainless Steel Heated Power Mirrors, Premium Interior, Dual High Back Air Ride Seats, Telescopic Tilt Wheel, Power Windows, Single Chrome Stack, Aluminum Fuel Tank, Aluminum Saddle Box, Half Fenders, Automatic Grease Lubrication System, 2 Fuel Tanks, Auxiliary Bunk Heater, Quarter Fenders, Air Side/Air Release 5th, 200 Inch Wheel Base, 11R22.5 Tires, Aluminum Disc Wheels



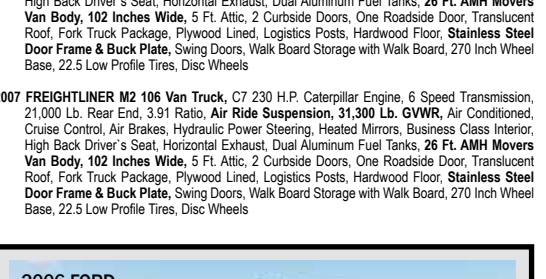
2001 FREIGHTLINER

FREIGHTLINER CL12064ST CENTURY
2001 FREIGHTLINER CL12064ST Century Conventional, 525,070 Miles, Series 60 12.7 Liter 430/470 H.P. Detroit Engine, Engine Brake, 10 Speed Transmission, 40,000 Lb. Rear Ends, Full Screw, 3.58 Ratio, Air Ride Suspension, Day Cab, Air Ride Cab, Air Conditioned, Cruise Control, Deep Chrome Bumper, Hydraulic Power Steering, Exterior Vinyl, Heated Power Mirrors, Signature Interior, Dual High Back Seats, Air Ride Driver's Seat, Telescopic Tilt Wheel, Single Chrome Stack, Dual Aluminum Fuel Tanks, Air Side/Air Release 5th, 172 Inch Wheel Base, 11R22.5 Tires, Disc Wheels, Aluminum Disc Front & Outside Rear



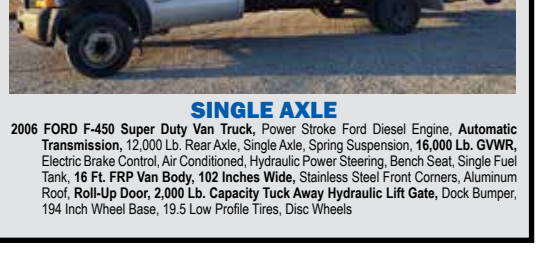
2007 FREIGHTLINER

VAN TRUCKS
2007 FREIGHTLINER M2 106 Van Truck, CT 230 H.P. Caterpillar Engine, 6 Speed Transmission, 21,000 Lb. Rear Ends, 3.91 Ratio, Air Ride Suspension, 31,300 Lb. GVWR, Air Conditioned, Cruise Control, Air Brakes, Hydraulic Power Steering, Heated Mirrors, Business Class Interior, High Back Driver's Seat, Horizontal Exhaust, Dual Aluminum Fuel Tanks, 26 FL AMH Movers Van Body, 192 Inches Wide, 5 Ft. Aisle, 2 Curbside Doors, One Roadside Door, Translucent Roof, Fork Truck Package, Piwyind Logistics Posts, Hardwood Floor, Stainless Steel Door Frame & Back Plate, Swing Doors, Walk Board Storage with Walk Board, 270 Inch Wheel Base, 22.5 Low Profile Tires, Disc Wheels



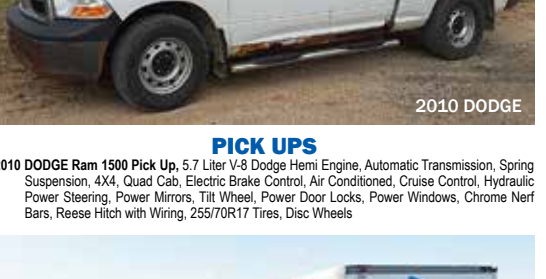
2007 FREIGHTLINER

VAN TRUCKS
2007 FREIGHTLINER M2 106 Van Truck, CT 230 H.P. Caterpillar Engine, 6 Speed Transmission, 21,000 Lb. Rear Ends, 3.91 Ratio, Air Ride Suspension, 31,300 Lb. GVWR, Air Conditioned, Cruise Control, Air Brakes, Hydraulic Power Steering, Heated Mirrors, Business Class Interior, High Back Driver's Seat, Horizontal Exhaust, Dual Aluminum Fuel Tanks, 26 FL AMH Movers Van Body, 192 Inches Wide, 5 Ft. Aisle, 2 Curbside Doors, One Roadside Door, Translucent Roof, Fork Truck Package, Piwyind Logistics Posts, Hardwood Floor, Stainless Steel Door Frame & Back Plate, Swing Doors, Walk Board Storage with Walk Board, 270 Inch Wheel Base, 22.5 Low Profile Tires, Disc Wheels



2006 FORD

SINGLE AXLE
2006 FORD F-450 Super Duty Van Truck, Power Stroke Ford Diesel Engine, Automatic Transmission, 12,000 Lb. Rear Axle, Single Axle, Spring Suspension, 16,000 Lb. GVWR, Electric Brake Control, Air Conditioned, Cruise Control, Hydraulic Power Steering, Heated Mirrors, Single Stack, Dual Fuel Tanks, 2 PTD, 4 Aluminum Water Tanks, Rear Discharge, Hand Gun, Storage Box, Double Frame, Auxiliary Engine Model # 6BTA, 5.9 Liter 177 H.P. Diesel Engine for Vacuum, 228 Inch Wheel Base, 11R22.5 Tires Rear, 385/65R22.5 Tires Front, Spokes



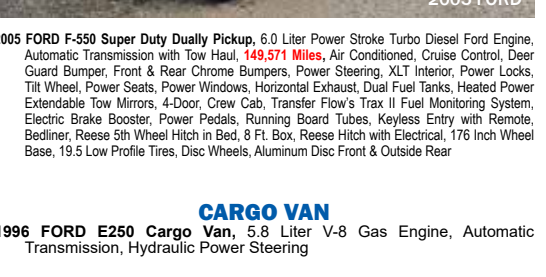
2010 DODGE

PICK UPS
2010 DODGE Ram 1500 Pickup, 5.7 Liter V-8 Dodge Hemi Engine, Automatic Transmission, Spring Suspension, 4X4, Quad Cab, Electric Brake Control, Air Conditioned, Cruise Control, Hydraulic Power Steering, Power Mirrors, Tilt Wheel, Power Door Locks, Power Windows, Chrome Nurf Bars, Reese Hitch with Wiring, 255/70R17 Tires, Disc Wheels



2013 MACK

MACK CXU613 PINNACLES
2013 MACK CXU613 Pinnacle Conventional, 607,396 Miles, MP7 395 H.P. Mack Engine, Engine Brake, Drive 12 Speed Automated Transmission, 40,000 Lb. Rear Ends, Full Screw, Air Ride Suspension, Day Cab, Air Ride Cab, Air Conditioned, Cruise Control, Hydraulic Power Steering, Air Faring, Side Extenders, Heated Mirrors, High Back Air Ride Driver's Seat, Telescopic Tilt Wheel, Single Stack, Dual Aluminum Fuel Tanks, Quarter Fenders, Tire Inflation System, Adjustable 5th, 164 Inch Wheel Base, 22.5 Low Profile Tires, Disc Wheels, Aluminum Disc Front



2013 MACK

MACK CXU613 PINNACLES
2013 MACK CXU613 Pinnacle Conventional, 607,396 Miles, MP7 395 H.P. Mack Engine, Engine Brake, Drive 12 Speed Automated Transmission, 40,000 Lb. Rear Ends, Full Screw, Air Ride Suspension, Day Cab, Air Ride Cab, Air Conditioned, Cruise Control, Hydraulic Power Steering, Air Faring, Side Extenders, Heated Mirrors, High Back Air Ride Driver's Seat, Telescopic Tilt Wheel, Single Stack, Dual Aluminum Fuel Tanks, Quarter Fenders, Tire Inflation System, Adjustable 5th, 176 Inch Wheel Base, 22.5 Low Profile Tires, Disc Wheels, Aluminum Disc Front



2013 MACK

MACK CXU613 PINNACLES
2013 MACK CXU613 Pinnacle Conventional, Non-Runner, MP7 395 H.P. Mack Engine, Engine Brake, Drive 12 Speed Automated Transmission, 40,000 Lb. Rear Ends, Full Screw, Air Ride Suspension, Day Cab, Air Ride Cab, Air Conditioned, Cruise Control, Hydraulic Power Steering, Air Faring, Side Extenders, Heated Mirrors, High Back Air Ride Driver's Seat, Telescopic Tilt Wheel, Single Stack, Dual Aluminum Fuel Tanks, Quarter Fenders, Adjustable 5th, 164 Inch Wheel Base, 22.5 Low Profile Tires, Disc Wheels, Aluminum Disc Front



2001 MACK

MACK CH613 TOW TRUCK
2001 MACK CH613 Tow Truck, 745,202 Miles, E-7 427 H.P. Mack Engine, 9 Speed Transmission, 40,000 Lb. Rear Ends, Full Screw, Full Screw, Air Ride Suspension, Out of Frame Overhaul Performed February 3, 2017 Approximately 55,000 Miles Ago, Air Ride Cab, Air Conditioned, Cruise Control, Deep Chrome Bumper, Hydraulic Power Steering, Exterior Vinyl, Stainless Steel Heated Power Mirrors, Panel Lights, Deluxe Interior, Dual High Back Air Ride Seats, Telescopic Tilt Wheel, Power Door Locks, Power Windows, Power Windows, Single Chrome Stack, Dual Aluminum Fuel Tanks, Full Fenders, 9 Ft. Flatted, 96 Inches Wide, 12 Inch Sides, 12 Inch Sides, 12 Inch Tailgate, Storage Box, 4 Aluminum Storage Boxes, Zuckel Model # 22030, Serial # 2342-C-303, 32,000 Lbs. Lift Rating Retracted, 13,000 Lbs. Lift Rating Extended, 85,000 Lbs. Tow Rating, Wied Remote Control, Light Bar, Amber Lights, Work Lights, Right Weigh Load Scale, 260 Inch Wheel Base, 22.5 Low Profile Tires, Aluminum Disc Wheels



1990 FORD

FORD L8000 VACUUM TRUCK
1990 FORD L8000 Vacuum Truck, 7.8 Liter 240 H.P. Diesel Engine, Allison Automatic Transmission, 40,000 Lb. Rear Ends, Full Screw, Center Spring Suspension, 56,000 Lb. GVWR, 16,000 Lb. Front Axle, Hydraulic Power Steering, Stainless Steel Mirrors, Single Stack, Dual Fuel Tanks, 2 PTD, 4 Aluminum Water Tanks, Rear Discharge, Hand Gun, Storage Box, Double Frame, Auxiliary Engine Model # 6BTA, 5.9 Liter 177 H.P. Diesel Engine for Vacuum, 228 Inch Wheel Base, 11R22.5 Tires Rear, 385/65R22.5 Tires Front, Spokes</